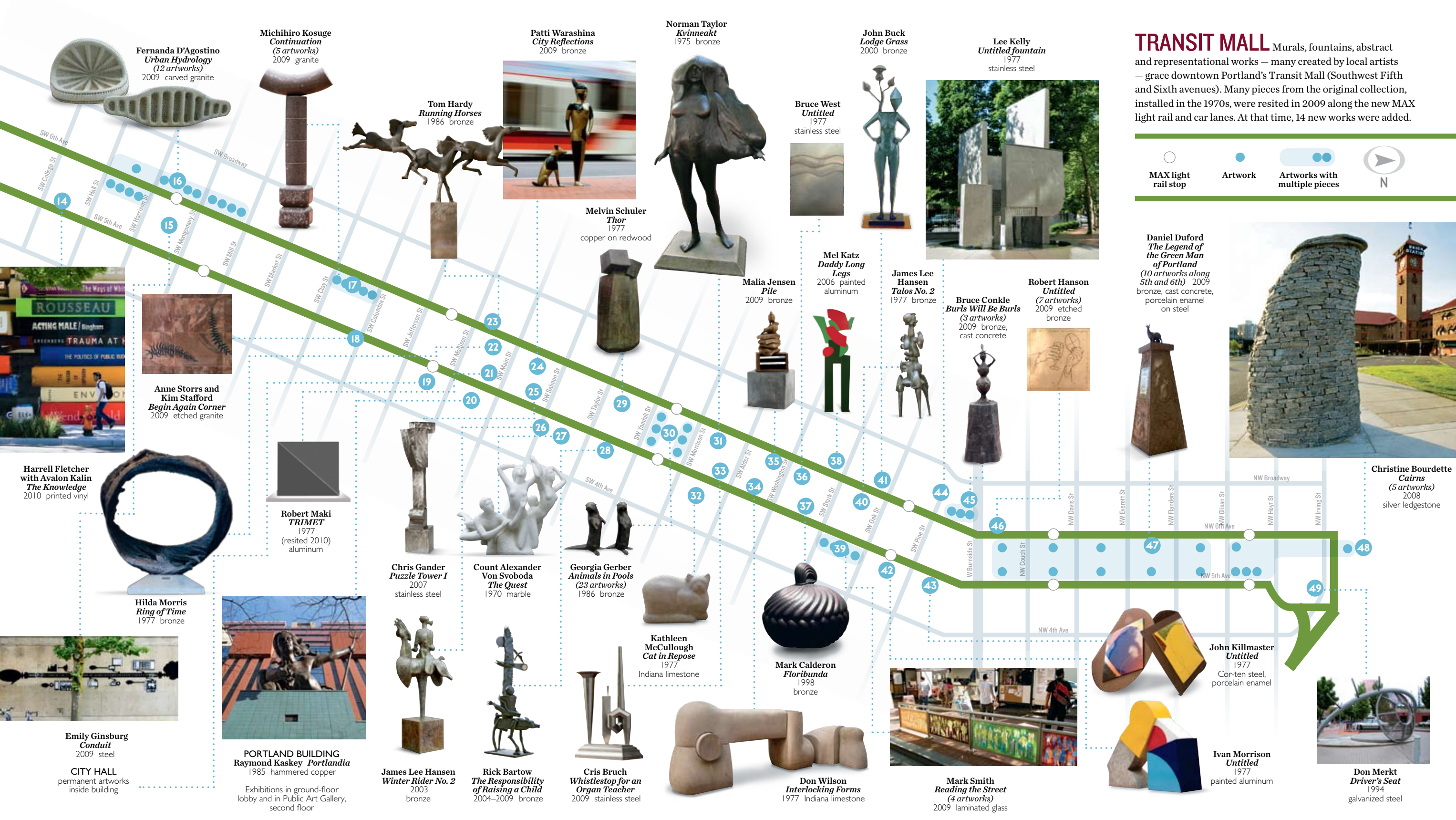


A GUIDE TO PORTLAND PUBLIC ART

TRANSIT MALL Murals, fountains, abstract and representational works — many created by local artists — grace downtown Portland's Transit Mall (Southwest Fifth and Sixth avenues). Many pieces from the original collection, installed in the 1970s, were resited in 2009 along the new MAX light rail and car lanes. At that time, 14 new works were added.



Fernanda D'Agostino
Urban Hydrology
(12 artworks)
2009 carved granite



Michihiro Kosuge
Continuation
(5 artworks)
2009 granite



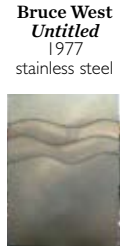
Tom Hardy
Running Horses
1986 bronze



Patti Warashina
City Reflections
2009 bronze



Norman Taylor
Kvinneakt
1975 bronze



Bruce West
Untitled
1977 stainless steel



John Buck
Lodge Grass
2000 bronze



Lee Kelly
Untitled fountain
1977 stainless steel



Melvin Schuler
Thor
1977 copper on redwood



Malia Jensen
Pile
2009 bronze



Mel Katz
Daddy Long Legs
2006 painted aluminum



James Lee Hansen
Talos No. 2
1977 bronze



Bruce Conkle
Burls Will Be Burls
(3 artworks)
2009 bronze, cast concrete



Robert Hanson
Untitled
(7 artworks)
2009 etched bronze



Daniel Duford
The Legend of the Green Man of Portland
(10 artworks along 5th and 6th)
2009 bronze, cast concrete, porcelain enamel on steel



Christine Bourdette
Cairns
(5 artworks)
2008 silver ledgestone



Anne Storrs and Kim Stafford
Begin Again Corner
2009 etched granite



Harrell Fletcher with Avalon Kalin
The Knowledge
2010 printed vinyl



Robert Maki
TRIMET
1977 (resited 2010) aluminum



Chris Gander
Puzzle Tower I
2007 stainless steel



Count Alexander Von Svoboda
Von Quest
1970 marble



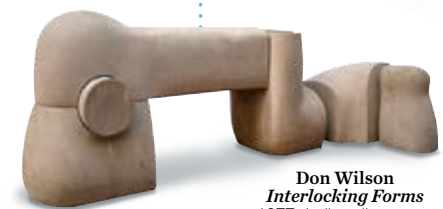
Georgia Gerber
Animals in Pools
(23 artworks)
1986 bronze



Kathleen McCullough
Cat in Repose
1977 Indiana limestone



Mark Calderon
Floribunda
1998 bronze



Don Wilson
Interlocking Forms
1977 Indiana limestone



Mark Smith
Reading the Street
(4 artworks)
2009 laminated glass



John Killmaster
Untitled
1977 Cor-ten steel, porcelain enamel



Ivan Morrison
Untitled
1977 painted aluminum



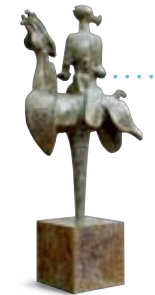
Don Merkt
Driver's Seat
1994 galvanized steel



Emily Ginsburg
Conduit
2009 steel



PORTLAND BUILDING
Raymond Kaskey
Portland
1985 hammered copper
Exhibitions in ground-floor lobby and in Public Art Gallery, second floor



James Lee Hansen
Winter Rider No. 2
2003 bronze



Rick Bartow
The Responsibility of Raising a Child
2004–2009 bronze



Cris Bruch
Whistlestop for an Organ Teacher
2009 stainless steel





ART ALL AROUND



You can't live in or visit Portland without encountering public art. Using this map as your guide, begin your walking tour from any point and discover a surprising mix of artistic styles, materials and settings within any given

10-block radius. You'll find public art integrated into architectural façades, along the street, in the parks, inside public buildings and in the sculpture garden outside of the Portland Art Museum.

Pose for a photo with the sculpture from the famous "Expose Yourself to Art" poster (*Kvinneakt*, #31 on map), which featured Portland Mayor Bud Clark. And visit the city's oldest public artwork – *Skidmore Fountain* (#95), installed in 1888 to quench the thirst of "horses, men and dogs."

If the weather isn't cooperating for an outdoor tour, visit the Public Art Gallery on the second floor of the Portland Building (#20) to get an overview of public art in the region and to learn the story behind the creation of *Portlandia*. (See "Indoor Arts," right, for details.)

The pieces listed in this guide were created by both internationally recognized and noted Pacific Northwest artists and were commissioned or purchased by the City of Portland, Multnomah County, TriMet, the State of Oregon or private corporations.

Pictured left and above, *Skidmore Fountain*, Olin Warner (#95)
Print courtesy of Oregon Historical Society, #CN 46999



Mercurial Sky, Dan Corson, Director Park (#68)



INDOOR ARTS

Explore an abundance of public art inside public buildings from Portland State University's Native American Student and Community Center on the south end of the map to the Oregon Convention Center, across the Willamette River to the north.

- | | |
|---|--|
| <p>108 CENTRAL LIBRARY
SW 10th btw Yamhill & Taylor</p> <p>19 CITY HALL
SW 4th btw Madison & Jefferson</p> <p>109 DEVELOPMENT SERVICES BUILDING
SW 4th btw Hall & College</p> <p>62 JUSTICE CENTER
SW 3rd btw Main & Madison</p> <p>110 MARK O. HATFIELD FEDERAL COURTHOUSE
SW 3rd btw Salmon & Main</p> | <p>10 NATIVE AMERICAN STUDENT AND COMMUNITY CENTER
SW Broadway & Jackson</p> <p>20 PORTLAND BUILDING
SW 5th btw Madison & Main</p> <p>111 PORTLAND CENTER FOR THE PERFORMING ARTS
SW Broadway btw Madison & Jefferson</p> <p>107 OREGON CONVENTION CENTER
NE Martin Luther King Jr. btw Holladay & Lloyd</p> |
|---|--|

Left, clockwise from upper left: *Divya*, Juan Alonso (#109); *Brief Cases*, Norie Sato, Tad Savinar, Bill Will (#19); *Ginkgoberry Gwa*, Ming Fay (#107); *Emerging Figure*, Jim Jackson (#10)



This page: *Lovejoy Columns*, Tom E. Stefopoulos (#85).
Front cover: *People's Bike Library of Portland*, Brian Borrello & Vanessa Renwick (#81). Photograph by Stuart Mullenberg

PUBLIC ART In the Central City

UNIVERSITY DISTRICT

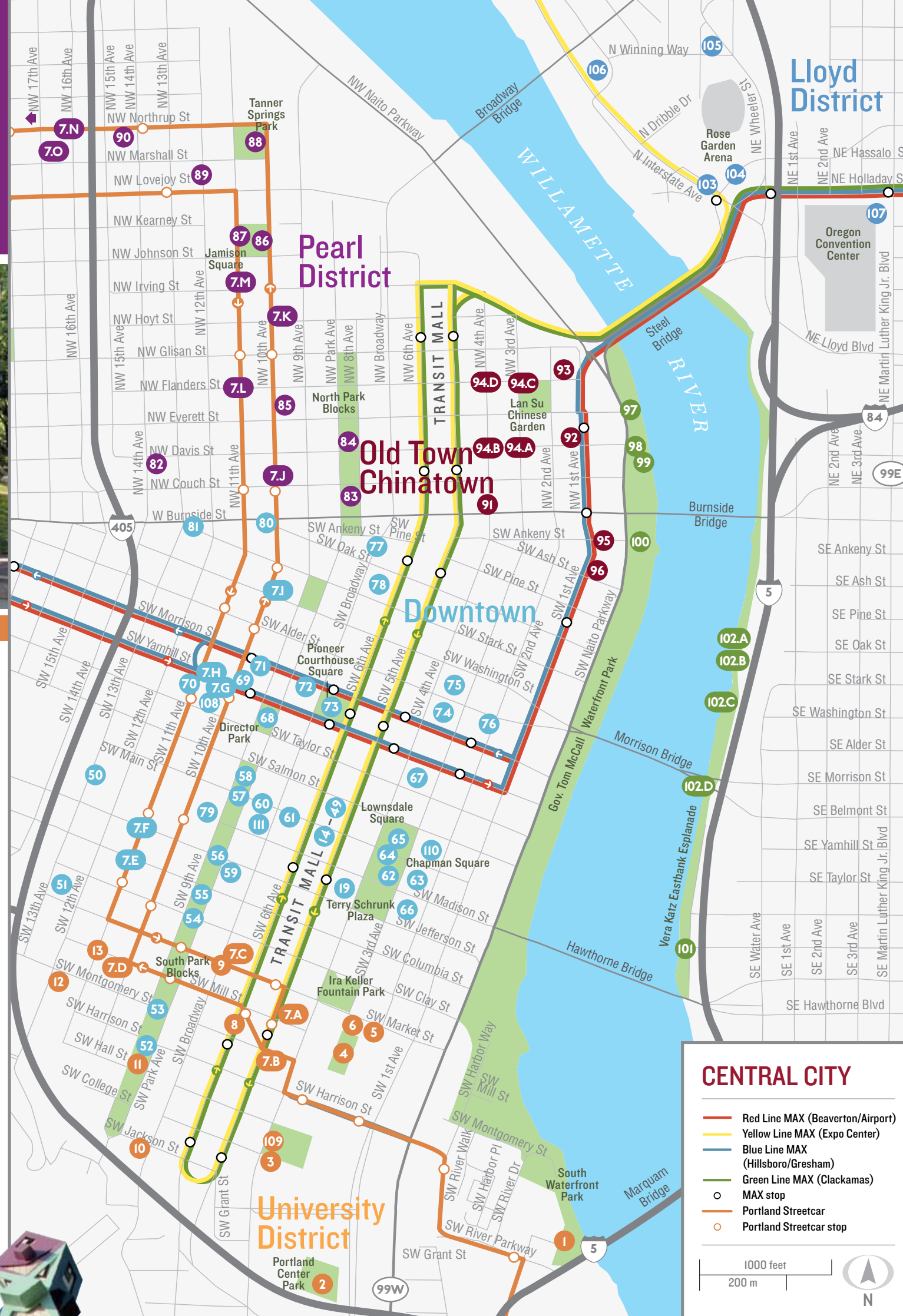
- 1 South Waterfront Park **Mathieu Gregoire** *River Shift* 1999 basalt, concrete, steel
- 2 Portland Center Park, SW 2nd & Lincoln **Lee Kelly and Bonnie Bronson** *Leland #1* 1975 Cor-ten steel, porcelain enamel
- 3 Northwest Center for Engineering, Science and Technology SW 4th & College **Ed Carpenter** *Tecotosh* 2006 laminated dichroic glass, lights, stainless steel truss, cables
- 4 Pettygrove Park, SW 3rd btw Market & Hamson **Manuel Izquierdo** *The Dreamer* 1979 Muntz bronze
- 5 200 Market Building, SW Market btw 2nd & 3rd **Mel Katz** *Red, Yellow, Blue* 1990 cast concrete, linoleum
- 6 SW 3rd & Market **Douglas Senft** *Awning* 1976 painted aluminum
- 7 Four locations **Harrell Fletcher** *More Everyday Sunshine* 2004 solar-powered lighting, motion detectors; lights shine after dusk at:
 - A SW 5th & Mill (platform spot)
 - B SW 4th & Montgomery (drinking fountain)
 - C SW Park & Market (tree knot)
 - D SW 10th & Mill (bench)
- 8 Urban Center Building and Plaza, SW 6th & Mill **John Aiken** *Untitled* 2000 granite
- 9 School of Education, SW Broadway & Market **Thomas Morandi** *Yanke Champion* 1983 steel
- 10 NATIVE AMERICAN STUDENT AND COMMUNITY CENTER SW Broadway & Jackson
 - **Ken MacKintosh and Lillian Pitt** *Salmon Cycle Marker* 2005 bronze, stainless steel
 - **Doug Hyde** *Chief Joseph* 1998 bronze
- 11 Neuburger Hall, west façade, SW Park btw Hamson & Hall **Thomas Hardy** *Oregon Country* 1962 bronze
- 12 Epler Hall Plaza, SW 12th & Montgomery **Margot Thompson** *Memorial Inscription* 2005 etched stainless steel
- 13 Joseph C. Blumel Hall, entrance plaza, SW 11th & Mill **Jerry Mayer** *Cobbletale* 1992 cobblestone



The Dreamer, Manuel Izquierdo, Pettygrove Park (#4)

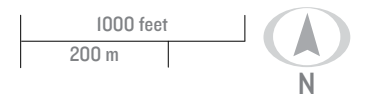
- 62 Chapman Square, SW 4th & Main **David Manuel** *Promised Land* 1993 bronze
- 63 JUSTICE CENTER SW 3rd btw Main & Madison
 - entrance exterior window **Ed Carpenter** *Untitled (Glass Window)* 1983 stained and beveled glass
 - entrance **Walter Dusenberry** *Portland Columns* 1983 travertine
 - entrance **Liz Mapelli** *Untitled (Arcade Ceiling)* 1983 glass tile
- 64 SW Main btw 3rd & 4th **Roland Hinton Perry** *Elk* 1900 bronze
- 65 Lowndale Square, SW 4th & Salmon **Douglas Tilden** *Spanish American War Soldier's Monument* 1906 bronze
- John Beaver** *Second Oregon Company Volunteers* 1914 bronze, limestone
- 66 Green-Wyatt Federal Building, SW 3rd btw Madison & Jefferson **Dmitri Hadzi** *River Legend* 1976 basalt
- 67 Smart Park, SW Yamhill btw 3rd & 4th
 - façade **Lee Hunt** *The Human Comedy* 1990 terra cotta
 - sidewalk **Bill Will and Katherine Dunn** *Streetwise* 1990 81 granite pavers
- 68 Director Park, in canopy, btw Yamhill & Taylor and 9th & Park **Dan Corson** *Mercurial Sky* 2010 digital video, LED lights
- 69 Smart Park, SW 10th & Yamhill **John Rogers** *118 Modules* 1979 slip-cast white stoneware
- 70 SW 11th btw Yamhill & Taylor **William Park with youth served by New Avenues for Youth and Outside In** *Country United* 2007 acrylic on concrete
- 7 Five locations **Harrell Fletcher** *More Everyday Sunshine* 2004 solar-powered lighting, motion detectors; lights shine after dusk at:
 - E SW 11th & Columbia (flower bed)
 - F SW 11th & Jefferson (tree)
 - G SW 10th & Yamhill (library bench)
 - H SW 11th & Yamhill (face in molding)
 - I SW 10th & Washington (manhole cover)
- 71 Smart Park, Morrison btw 9th & 10th **Keith Jellum** *Electronic Poet* 1984 bronze, LED board
- 72 Nordstrom, SW Yamhill btw Broadway & Park **Garth Edwards** *Urban Arrangements* 1990 brushed stainless steel
- 73 PIONEER COURTHOUSE SQUARE SW Broadway btw Morrison & Yamhill
 - **Omen Design Group Inc.** *Weather Machine* 1988 mixed media
 - **J. Seward Johnson** *Allow Me* 1984 bronze, aluminum, stainless steel
- 74 Smart Park, SW Morrison btw 3rd & 4th **Gary Hirsch** *Upstream Downtown* 1992 aluminum, acrylic, enamel
- 75 SW Alder btw 3rd & 4th **Bonnie Bronson** *Nepali Window* 1989 enameled steel
- 76 ODS Tower, SW 2nd & Alder **Judy Pfaff** *Ya - Wa* 2000 western red cedar, bronze, copper, steel, acrylic
- 77 US Outdoor Store, 219 SW Broadway **Sean Bennett and Dan Cohen** *Winter Wonderland* 2006 enamel and oil on brick
- 78 US Bank, SW 6th & Stark and SW Broadway & Stark **Avard Fairbanks** *Untitled* 1931 bronze relief doors
- 79 PORTLAND ART MUSEUM 1219 SW Park
 - on Park **Roy Lichtenstein** *Brushstrokes* 1996 painted and fabricated aluminum
 - on SW 10th & Jefferson **Clement L. Meadmore** *Split Ring* 1969 Cor-ten steel Courtyard
 - **Anthony Caro** *Strip Stake* 1971-74 steel
 - **James Lee Hanson** *Naga Stand from the Guardian Series* 1970-71 bronze
 - **Allan Houser** *Desert Harvest* 1982 bronze
 - **Manuel Izquierdo** *Eye of Orion* 1981 bronze
 - **Hilda Morris** *Winter Column* 1979 bronze
 - **Gwynn Murrill** *Coyote VI* 1986 bronze
- 80 SW 10th & Burnside **Pete Beeman** *Pod* 2002 stainless steel, titanium, bronze
 - **Manuel Neri** *Piedra Negra* 1992 marble

Tikitomoniki Totems, Kenny Scharf (#87)



CENTRAL CITY

- Red Line MAX (Beaverton/Airport)
- Yellow Line MAX (Expo Center)
- Blue Line MAX (Hillsboro/Gresham)
- Green Line MAX (Clackamas)
- MAX stop
- Portland Streetcar
- Portland Streetcar stop



- 81 SW 13th & W Burnside **Brian Borrello & Vanessa Renwick** *People's Bike Library of Portland* 2009 steel, gold leaf, bicycles

PEARL DISTRICT

- 82 NW 14th & Davis **Virginia Flynn** *Pearl Vignettes* 2008 aluminum plate
- 83 North Park Blocks at Burnside **Da Tung and Xi'an Bao Bao** (replica from Shang Dynasty) 2002 bronze
- 84 North Park Blocks btw Davis & Everett **William Wegman** *Dog Bowl* 2001 bronze, granite, artificial turf
- 85 NW 10th btw Everett & Flanders **Tom E. Stefopoulos** *Lovejoy Columns* 1948-52 (resited 2006) photo reconstruction by Randy Shelton over original concrete columns from Lovejoy Ramp
- 86 JAMISON SQUARE NW 11th & Johnson
 - **Alexander Liberman** *Contact II* 1972 painted steel
 - **Mauricio Saldaña** *Rico Pasado* 2006 granite
- 87 NW 11th btw Johnson & Kearney (4 sculptures) **Kenny Scharf** *Tikitomoniki Totems* 2001 painted aluminum
- 88 Tanner Springs Park, NW 10th & Marshall **Herbert Dreiselt** *Art Walk* 2005 glass, train rails
- 7 Six locations **Harrell Fletcher** *More Everyday Sunshine* solar powered lighting, motion detectors; lights shine after dusk at:
 - J NW 10th & Couch (manhole in sidewalk)
 - K NW 10th & Hoyt (downspout)
 - L NW 11th & Flanders (building vent)
 - M NW 11th & Irving (bench)
 - N NW 16th & Northrup (metal in asphalt)
 - O NW 21st & Northrup (word on back of building)

- 89 NW 12th btw Marshall & Lovejoy **Dana Lynn Louis** *Metabolic Shift* 2003 glass
- 90 NW 14th & Northrup **Scott Sonnicksen** *Falling Light* 2008 concrete block coated with epoxy

OLD TOWN/CHINATOWN

- 91 NW 4th & Burnside **Yu Tang Wang, architect; Sun Chau, artist** *Chinatown Gateway* 1986 bronze, marble, granite, wood, tile, steel
- 92 Smart Park, NW 1st & Davis **David Kerner** *Untitled* 1990 neon
- 93 Oregon Department of Transportation, 123 NW Flanders **Michihiro Kosuge** *Japanese Maple Tree With Rocks* 1995 basalt
- 94 NW 3rd & 4th at Davis & Flanders **Brian Goldbloom** *Festival Lanterns* 2006 granite, steel, lighting
 - A NW 3rd & Davis
 - B NW 4th & Davis
 - C NW 3rd & Flanders
 - D NW 4th & Flanders
- 95 SW 1st & Ankeny **Olin Warner** *Skidmore Fountain* 1888 bronze, granite
- 96 PORTLAND FIRE AND RESCUE ADMINISTRATION 55 SW Ash btw Naito & 1st
 - along 1st Ave **Robert Calvo** *Ascension* 1996 steel, brick, glass, reinforced gypsum
 - main entrance **Jack Archibald** *Engine* 2009 stained glass

LOOKING FOR MORE?
Visit www.racc.org for more information on public art, and TravelPortland.com for information on Portland's cultural offerings.



Ghost Ship, RIGGA, Eastbank Esplanade (#102.A)

WATERFRONT PARK

- 97 at NW Everett **Lee Kelly and Michael Stirling** *Friendship Circle* 1990 stainless steel, digital audio
- 98 at NW Davis **Robert Murase and Associates** *Japanese American Historical Plaza* 1990 basalt
- 99 at NW Davis **Jim Gion** *Songs of Innocence, Songs of Experience* 1990 bronze
- 100 at SW Ankeny **Bruce West** *Sculpture Stage* 1976 (resited 2009) stainless steel

VERA KATZ EASTBANK ESPLANADE

- 101 north of Hawthorne Bridge **Bill Bane** *Vera Katz* 2006 bronze
- 102 btw Morrison Bridge & floating walkway **RIGGA (Ean Eldred, James Harrison, John Kashiwabara, Peter Nylen)** 2001
 - A *Ghost Ship* copper, art glass, stainless steel, metal halide and halogen lamps
 - B *Stack Stalk* mild steel, stainless steel, glass float, electric light
 - C *Alluvial Wall* mild steel, bronze, electric light
 - D *Echo Gate* copper

LLOYD DISTRICT

- 103 Interstate/Rose Quarter MAX station **Brian Borrello** *Silicon Forest* 2003 stainless steel, LED lights
- ROSE QUARTER
 - 104 NE Multnomah btw Interstate & Wheeler **Ilan Averbuch** *Little Prince* 1995 copper, steel
 - 105 N Winning & Center **Ilan Averbuch** *Earth, Water and Heaven* 1995 stone, copper, steel, wood
 - 106 N Broadway & Larrabee **Ilan Averbuch** *Terra Incognita* 1995 stone, wood, steel
- 107 OREGON CONVENTION CENTER NE Holladay & Martin Luther King Jr.
 - **Michael Dente** *The Dream* 1998 bronze
 - **Buster Simpson** *Host Analog* 1991 (resited 2001) stainless steel irrigation, basalt, old growth (windfall) logs, porcelain enamel signage, drinking fountain
 - NE Holladay & 3rd **Robert Coburn** *Bell Circles II* (donated by Portland's sister cities Sapporo, Japan and Ulsan, South Korea) 1990 bronze, brick, granite

Chinatown Gateway, Yu Tang Wang, architect, and Sun Chau, artist (#91)



DOWNTOWN

- 14-49 See Transit Mall map on opposite side
- 50 Outside In, 1132 SW 13th **Michael T. Hensley** *Untitled* 2001 painted perforated steel
- 51 James Hawthorne Apartments, 1510 SW 13th **Jack Archibald** *Icarus Triumphant* 2010 stained glass
- SOUTH PARK BLOCKS
 - 52 btw Hamson & Hall **Donald Wilson** *Holon* 2003 granite
 - 53 at Montgomery **Frederic Littman** *Farewell to Orpheus* 1973 bronze
 - 54 btw Market & Clay **Paul Sutinen** *In the Shadow of the Elm* 1984 granite
 - 55 btw Columbia & Jefferson **Steven Gilman** *Peace Chant* 1984 granite
 - 56 btw Jefferson & Madison **Alexander Phimister Proctor** *Theodore Roosevelt, Rough Rider* 1922 bronze
 - 57 btw Main & Madison **George Fite Waters** *Abraham Lincoln* 1926 bronze
 - 58 btw Salmon & Main **Oliver Barrett** *Rebecca at the Well (Shemanski Fountain)* 1926 bronze, cast stone
 - 59 Oregon History Museum, btw Jefferson & Madison **Richard Haas** *Oregon History* 1990 tromp l'oeil mural
- 60 SW Main btw Broadway & Park **Valerie Otani** *Folly Bollards* 1998 bronze
- 61 Gus J. Solomon Federal Courthouse, SW 6th & Main **Manuel Neri** *Ventana al Pacifico* 1989 marble