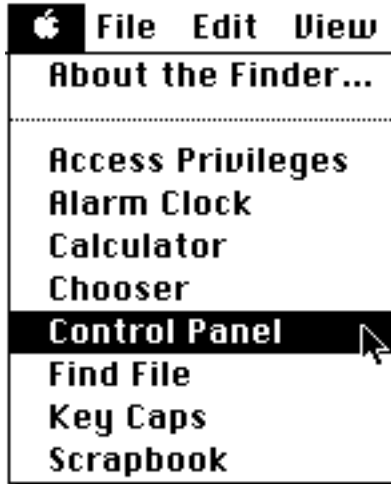


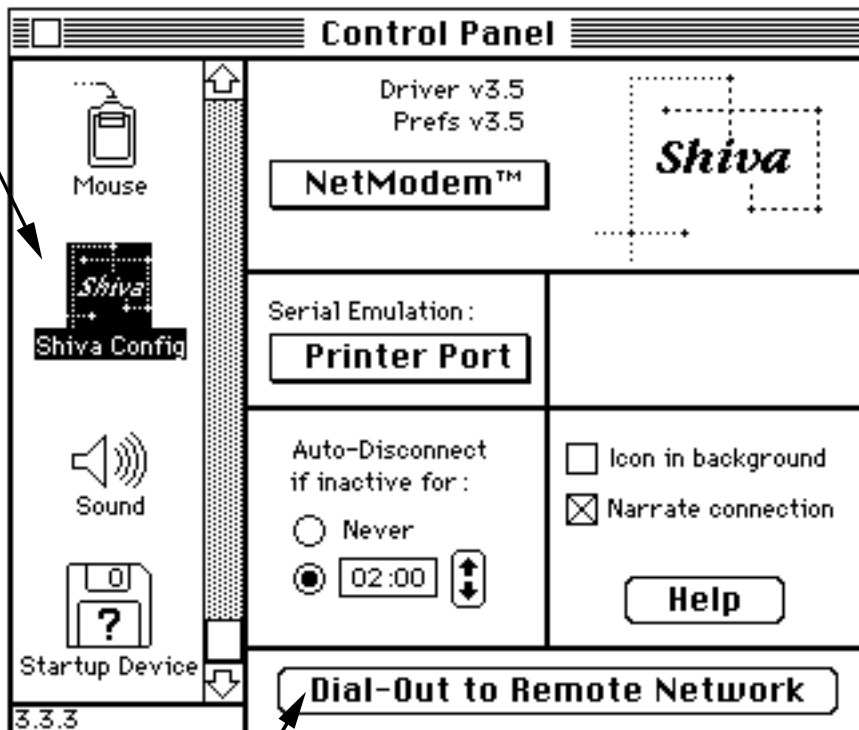
Connect to VAX from Tokyo With NetModem

Anthony Hornof
December 3, 1990



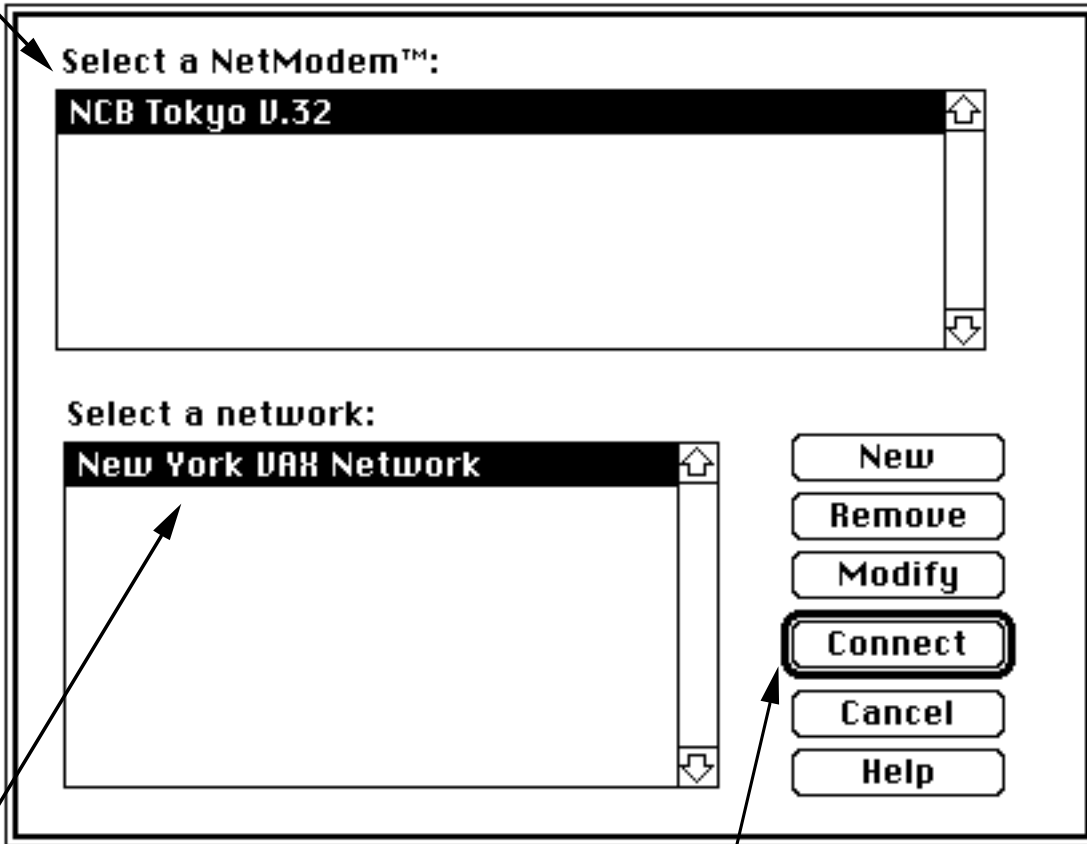
- 1 Turn on Macintosh
- 2 Turn on NetModem V.32
- 3 Open "Control Panel"

- 4 Scroll and click on "Shiva Config"



- 5 Click on "Dial Out to Remote Network"

6 Click on "NCB Tokyo V.32"

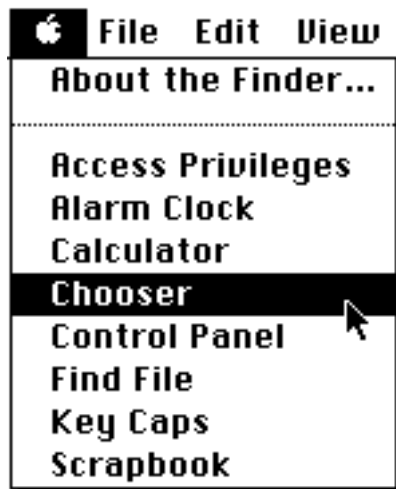


7 Click on "New York VAX Network"

8 Click on "Connect"

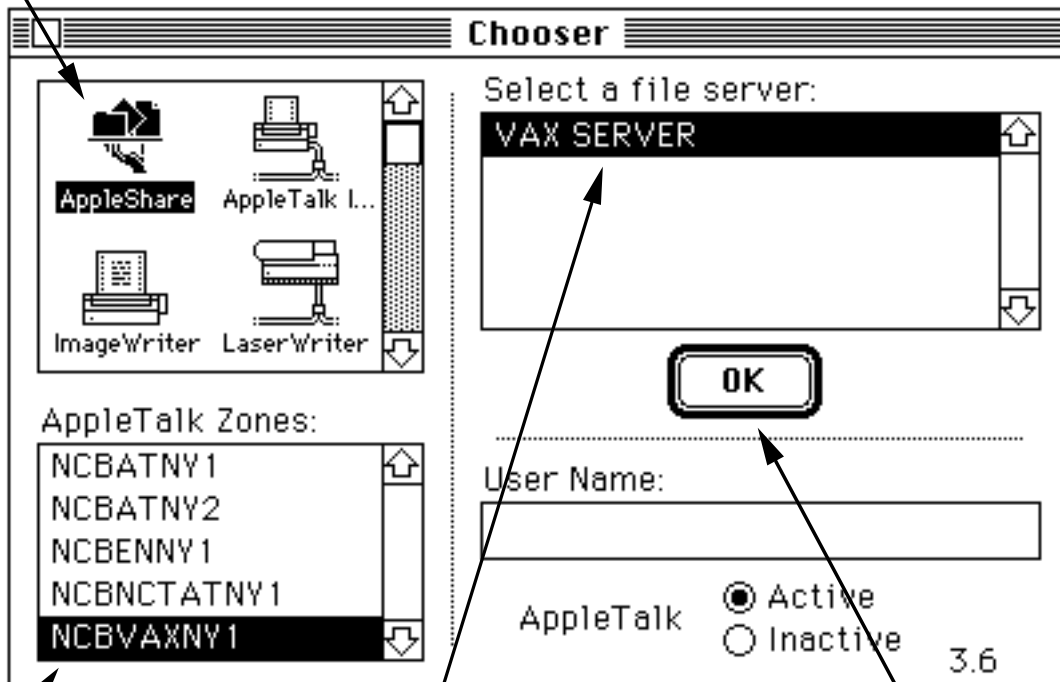
9 Type in the network password: _____





10 Open "Chooser"

11 Select "AppleShare"



12 Click on "NCBVAXNY1"

13 Click on "VAX Volume"

14 Click "OK"

15 Type in your Name: _____

Connect to the file server "UAX SERVER" as:

Guest
 Registered User

Name:

Password: (Clear text)

Cancel Set Password OK

v2.0.2

16 Type in your Password: _____

17 Click "OK"

18 Click on "ACCSOPD VOLUME"

UAX SERVER

Select the server volumes you want to use:

ACCSOPD VOLUME	<input checked="" type="checkbox"/>	↑
LNREVIEW/IRCAD VOLUME	<input type="checkbox"/>	▤
GRAFFAIRS VOLUME	<input type="checkbox"/>	▤
ADMINS VOLUME	<input type="checkbox"/>	↓

Checked volumes (☒) will be opened at system startup time.

Quit OK

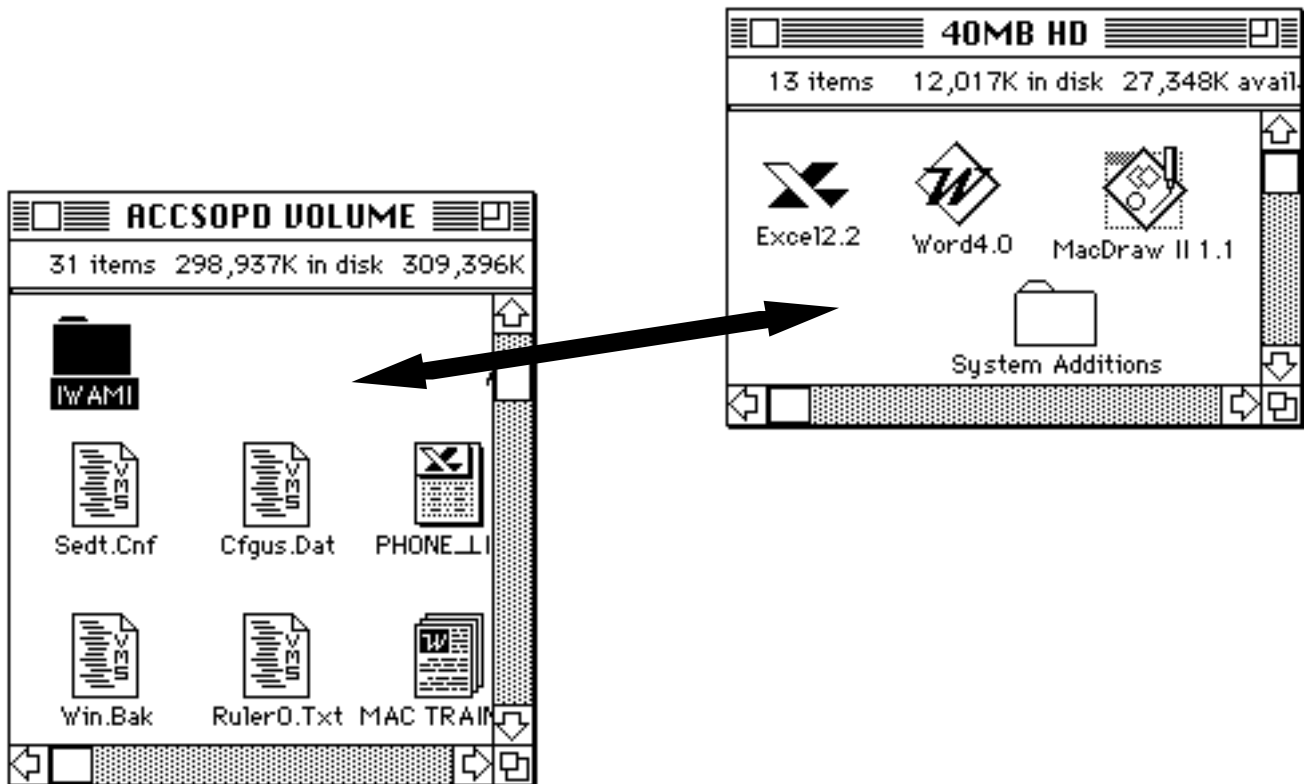
v2.0.2

19 Click "OK"

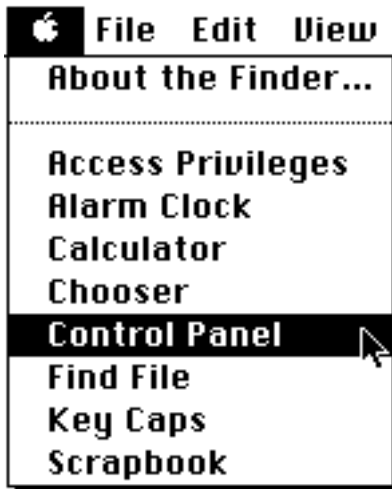


20 Double click on the new "Server" icon that appears on the Desktop

21 Drag files between the VAX and your hard drive or floppies

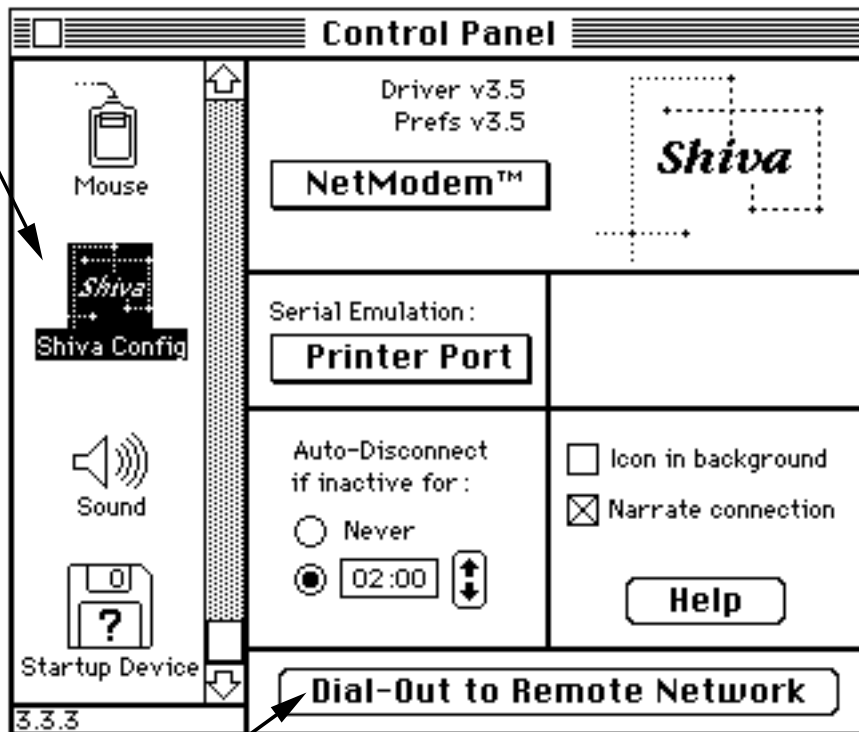


Hang up when you are done!

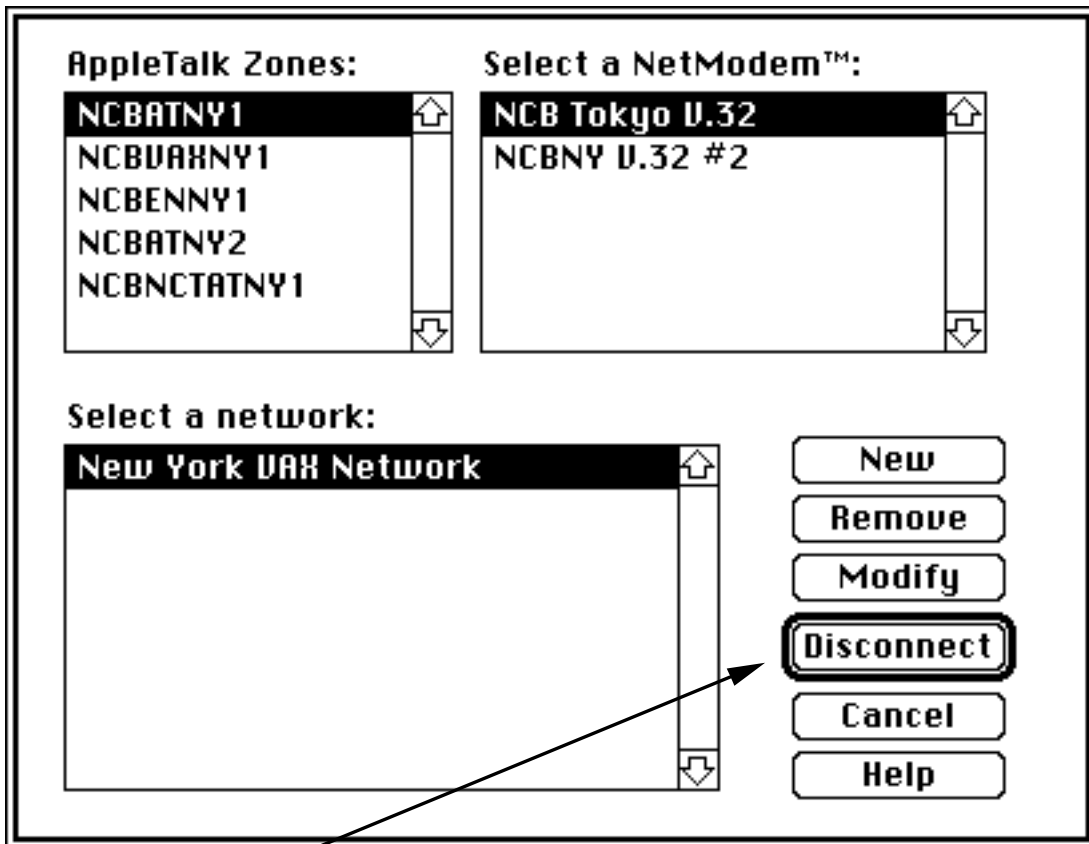


1 Open "Control Panel"

2 Scroll and click on "Shiva Config"



3 Click on "Dial Out to Remote Network"



4 Click on "Disconnect"



5 Click on "OK"