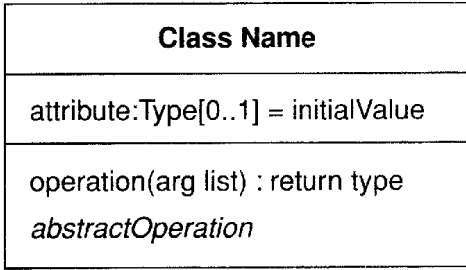


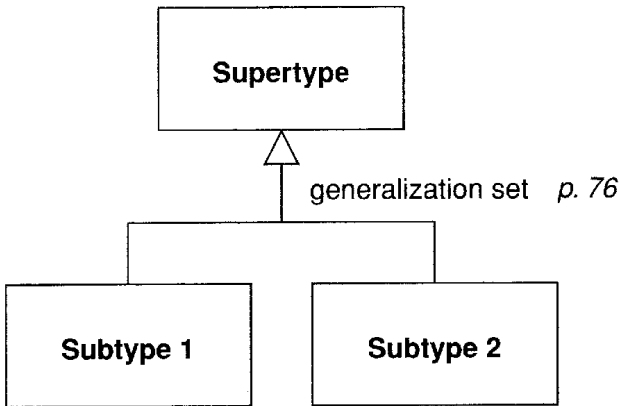
UML Diagrams

UML = Unified Modeling Language

Class

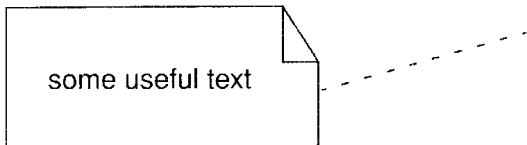


Generalization

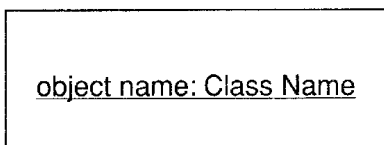


Constraint {name: description} p. 49
Keyword «keyword» p. 65

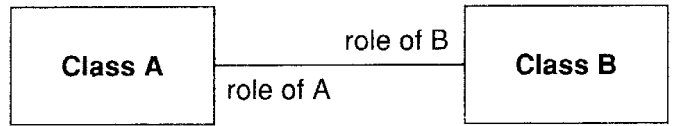
Note



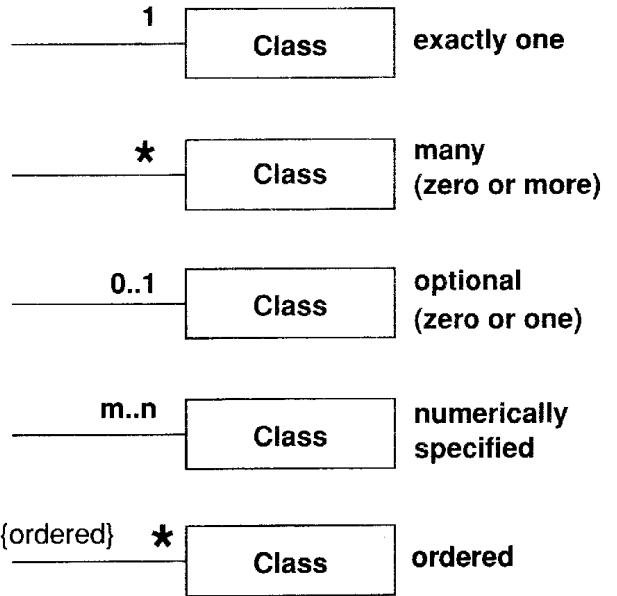
Instance Specification



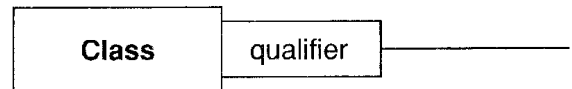
Association



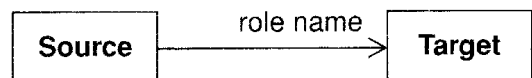
Multiplicities



Qualified Association



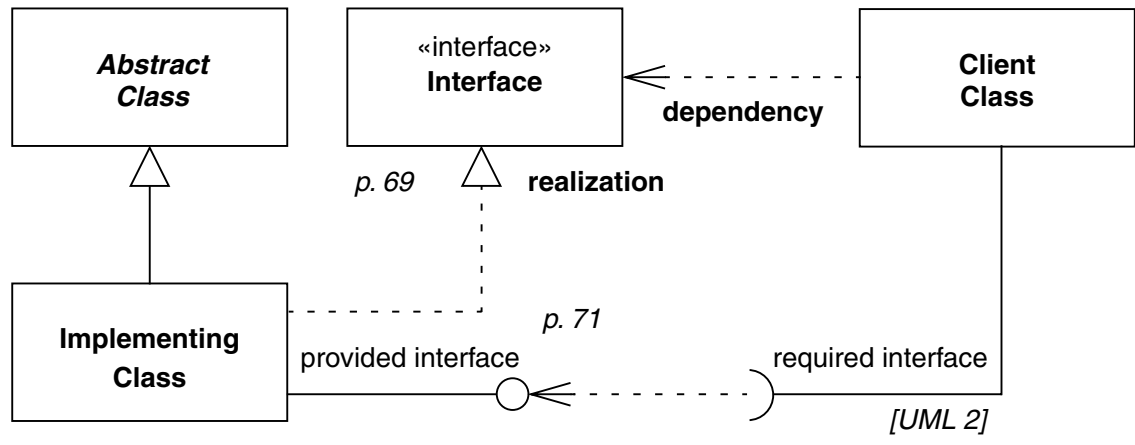
Navigability



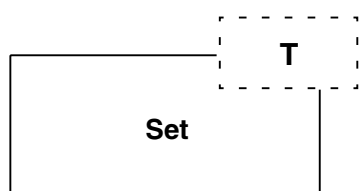
Dependency



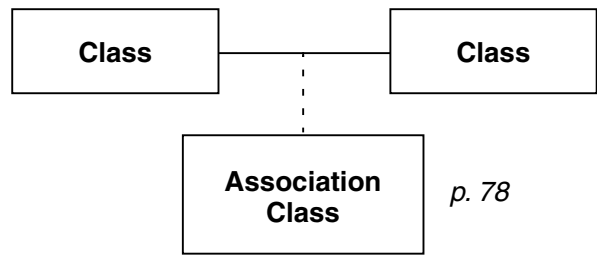
Class Diagram



template class p. 81



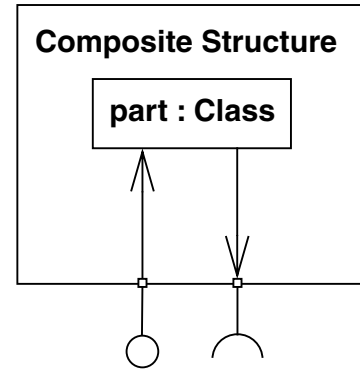
bound element



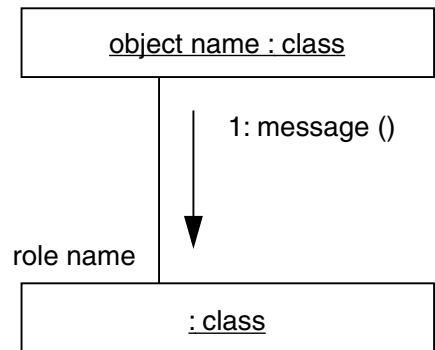
p. 139



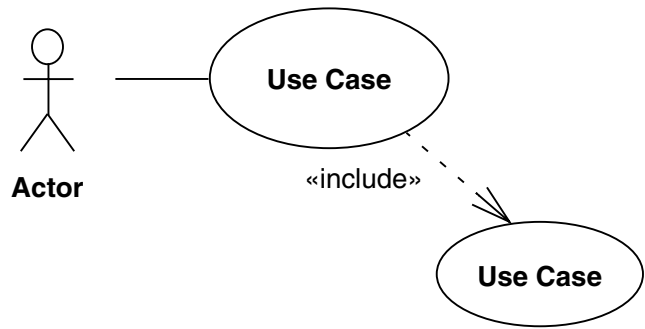
Composite Structure p. 135

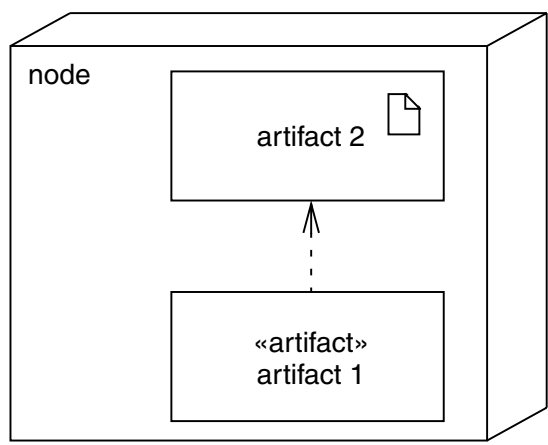
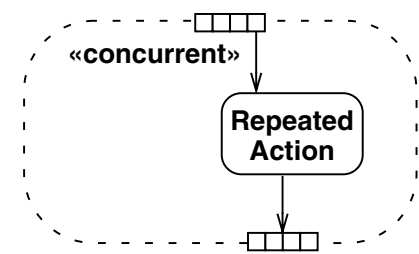
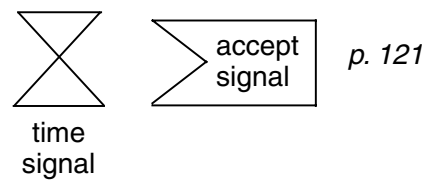
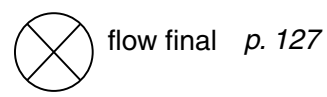
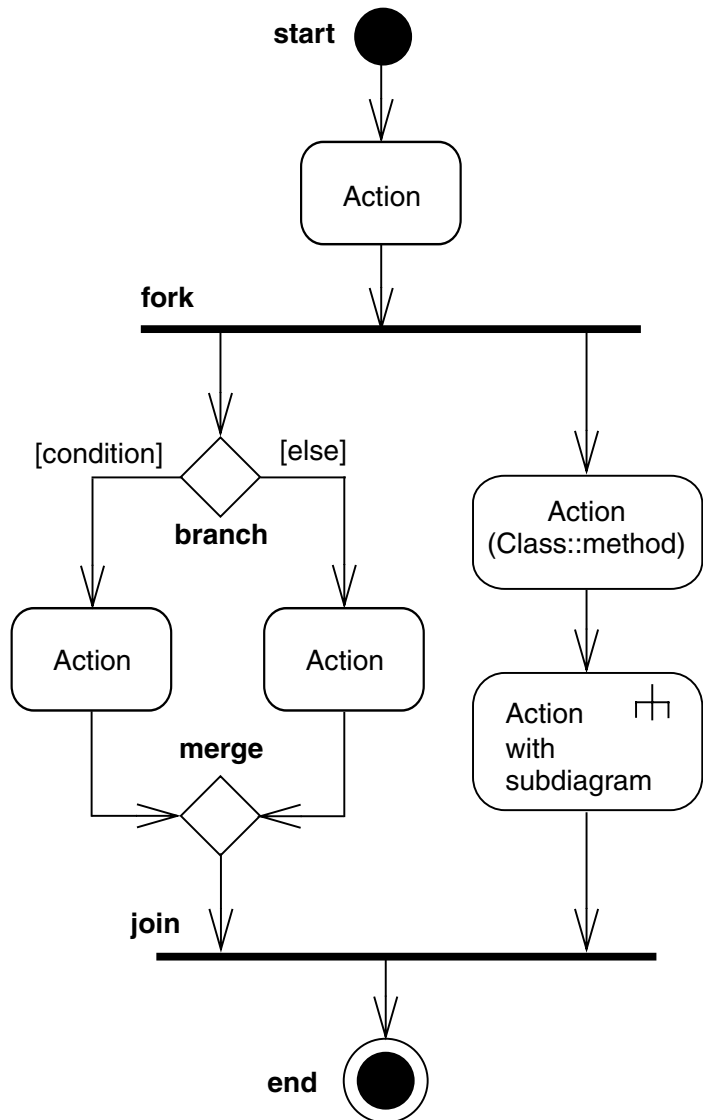
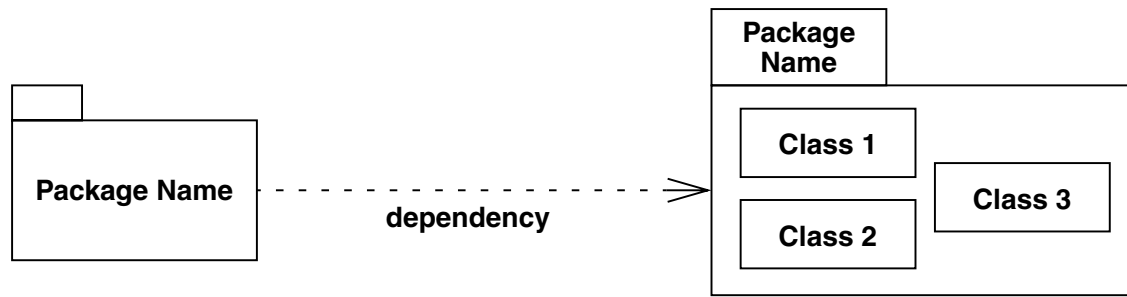


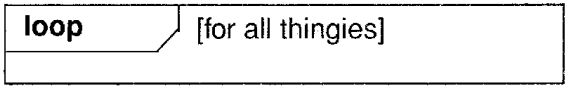
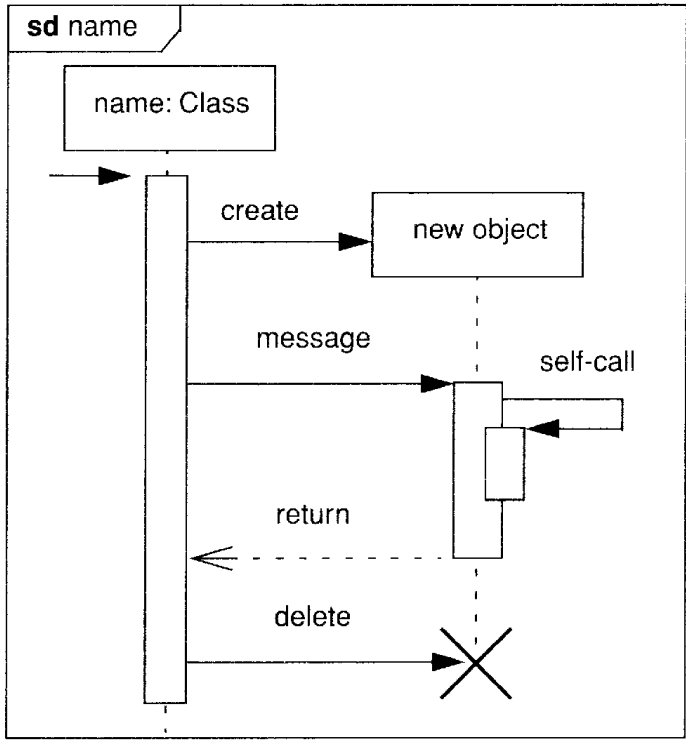
Communication Diagram p. 131



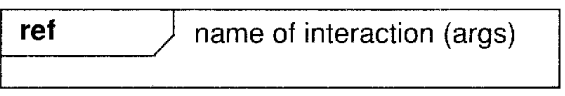
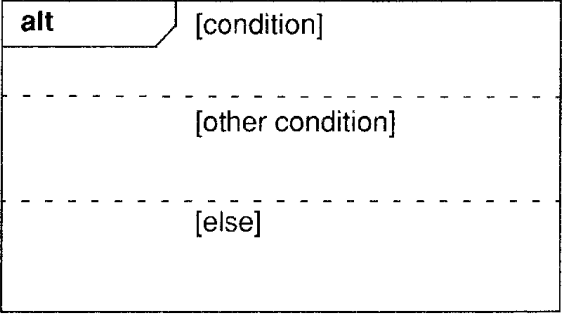
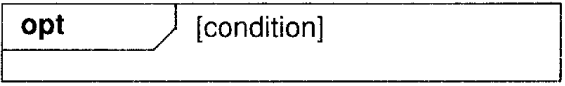
Use Case Diagram p. 99



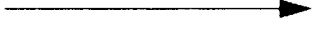




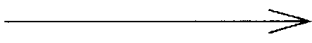
p. 57



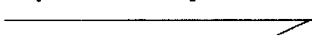
synchronous p. 61



asynchronous [UML >= 1.4]



asynchronous [UML <= 1.3]



*: iteration message () [UML 1] p. 59
[condition] message ()

State Diagram p. 107

