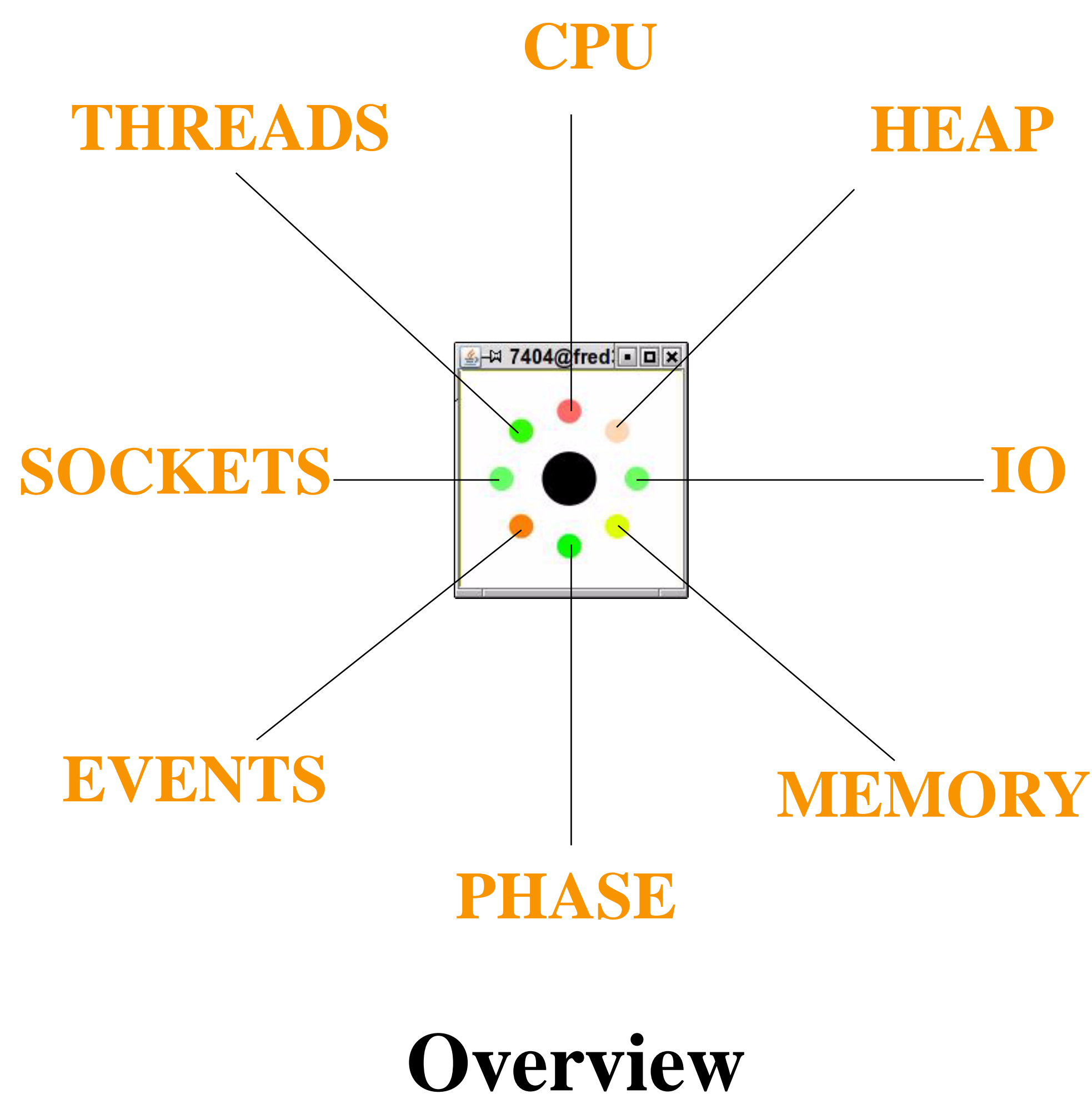


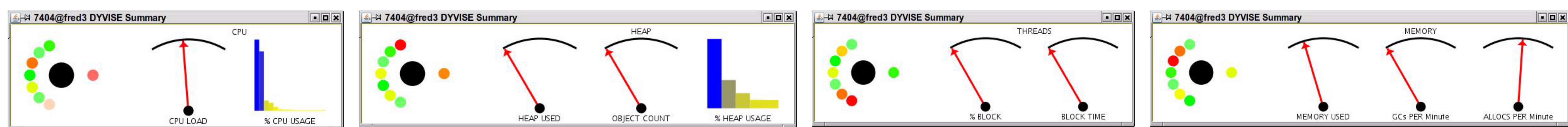
CONTROLLED

- User settable overhead
- Dynamic attach and detach
- Dynamic enable and disable
- Interval-based & cumulative analysis
- Time travel over the run
- User set marks
- Multiple processes on multiple machines
- User requested heap dumps/GC

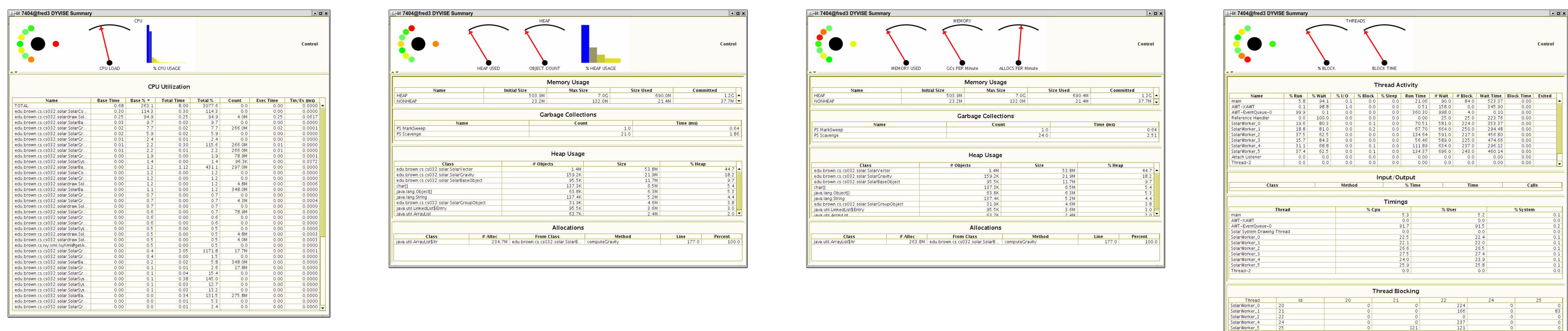


DETAILED

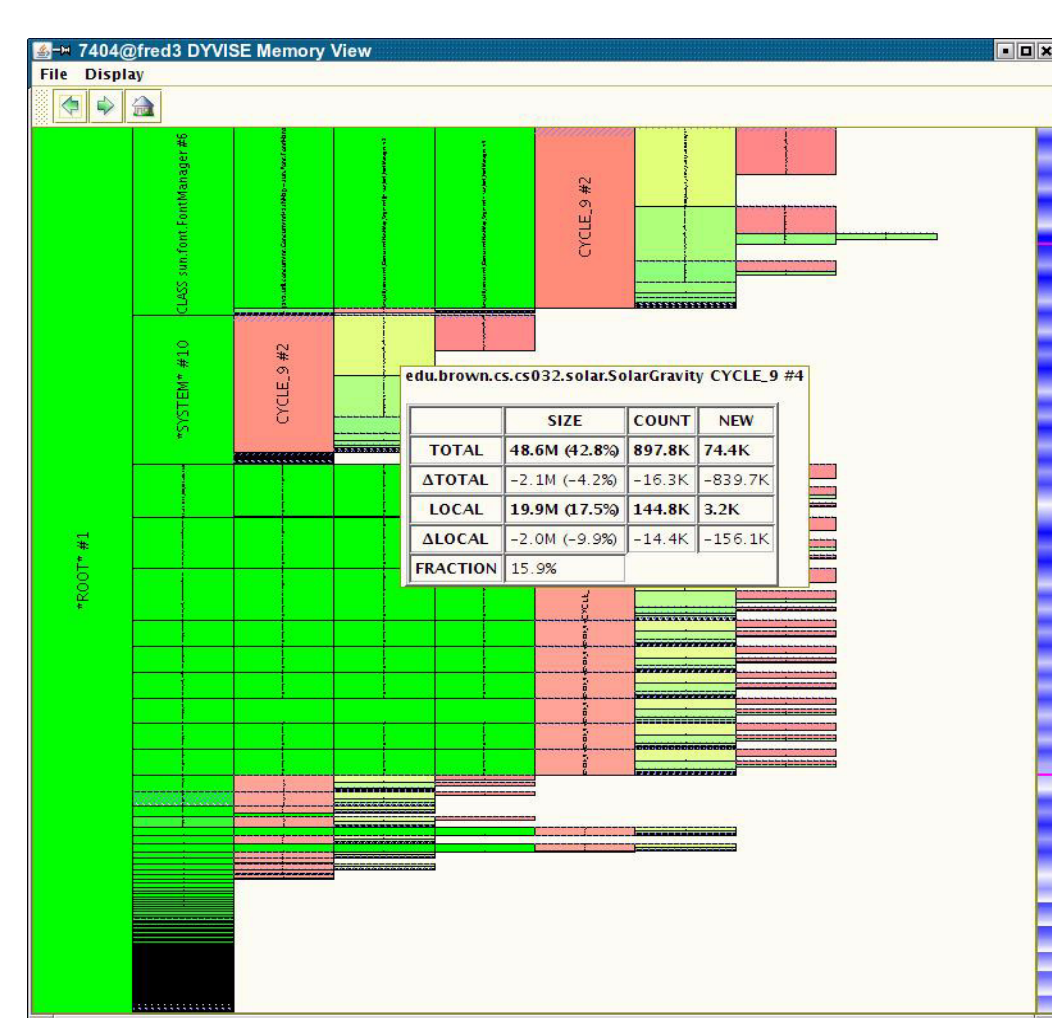
- Overview, high-level and low-level details
- Multiple performance aspects
- Priority-based, automated detailing
- Combines stack sampling and instrumentation
- \Heap ownership visualization
- Time view with summaries and fish-eye detailing



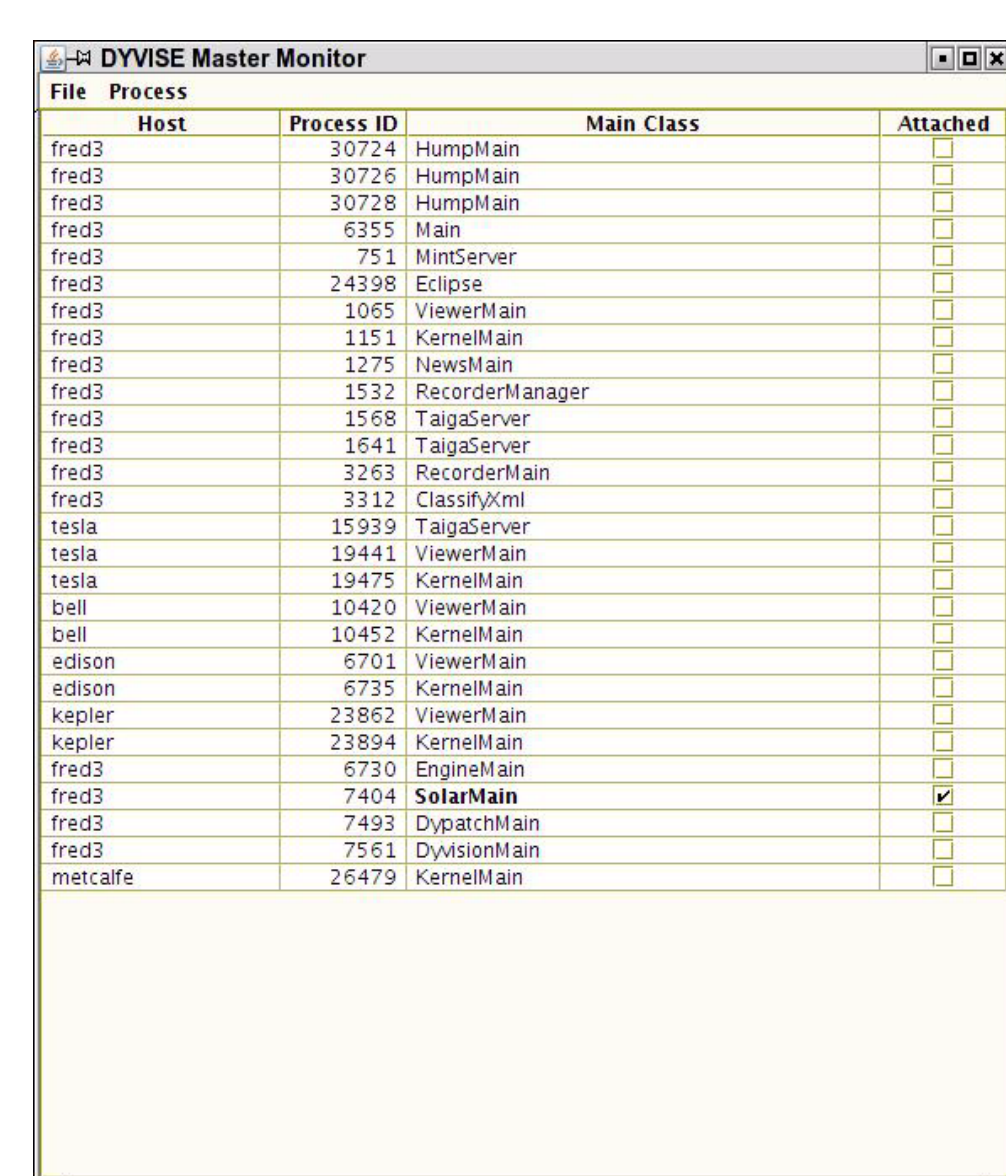
High-level detailing



Detailed Information

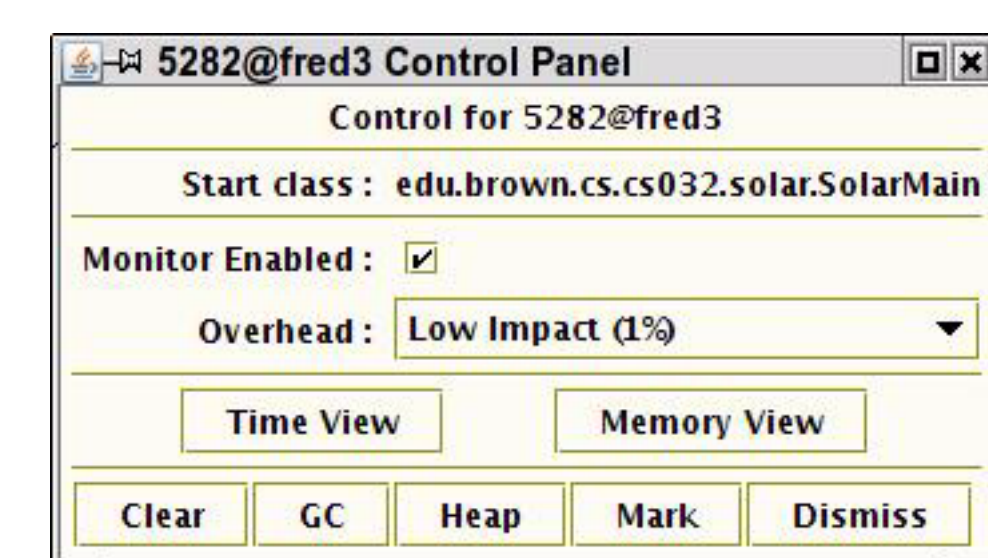
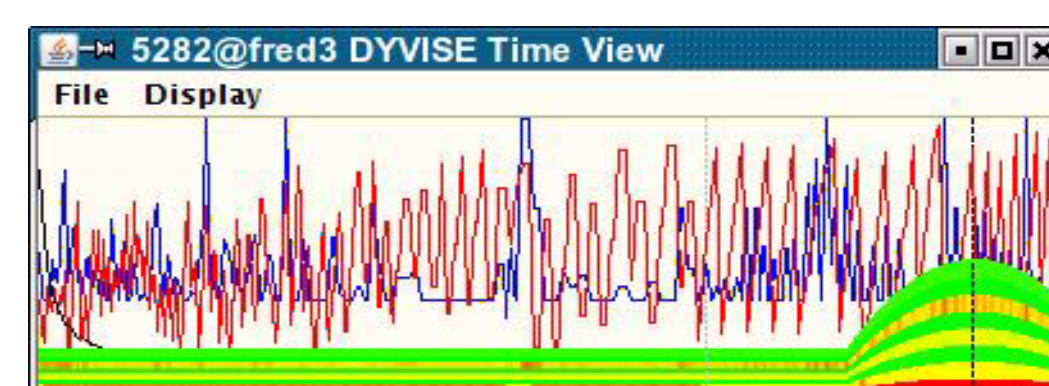
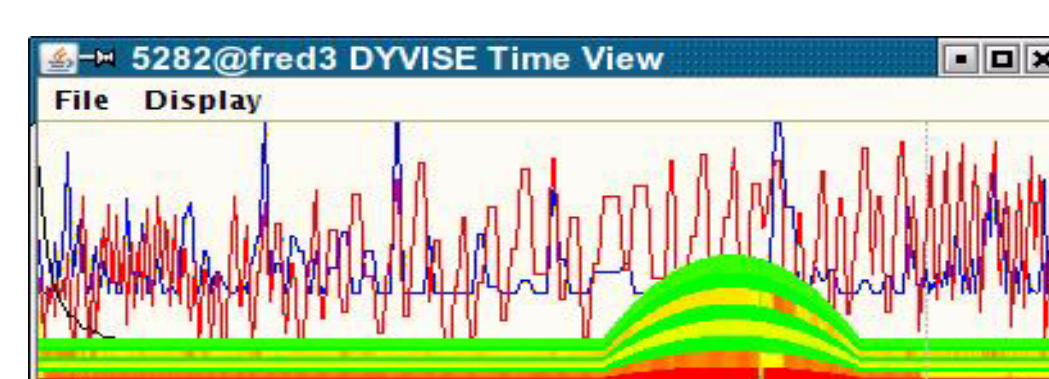
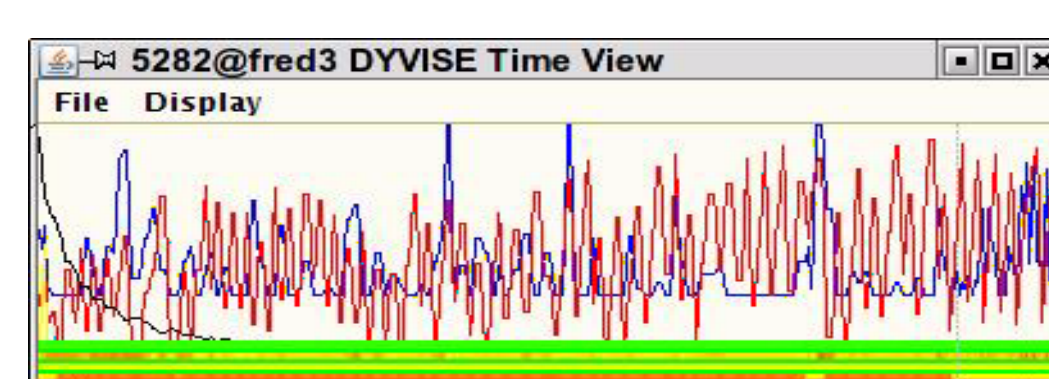


SIZE	COUNT	NEW
TOTAL 484M (62.8%) 897.8K	24.1M	24.1M
ATOMIC 2.23M (4.7%) 16.3K	819.7K	819.7K
LOCAL 18.9M (2.75%) 144.8K	1.2K	1.2K
ALLOCED 2.88M (4.9%) 14.4K	126.1K	126.1K



Process Viewer window showing a list of processes with columns: Host, Process ID, Main Class, Attached.

Host	Process ID	Main Class	Attached
fred3	30724	HumphMan	
fred3	30726	HumphMan	
fred3	30728	HumphMan	
fred3	6355	Main	
fred3	24398	Editor	
fred3	1085	ViewerMan	
fred3	1152	KernelMan	
fred3	1275	NewsMan	
fred3	2152	RecorderManager	
fred3	1558	TagServer	
fred3	1541	TagServer	
fred3	2263	RecorderMan	
fred3	3114	CashlyWin	
fred3	15292	KernelMan	
tedla	19441	ViewerMan	
tedla	15475	KernelMan	
bell	10420	ViewerMan	
bell	10452	KernelMan	
edison	6701	ViewerMan	
edison	6735	KernelMan	
kapoor	23862	ViewerMan	
kapoor	23894	KernelMan	
fred3	6730	EngineMan	
fred3	7404	SolarMain	
fred3	7403	DyssonMan	
fred3	7561	DyssonMan	
metcalfe	26479	KernelMan	



Memory Viewer

Process Viewer

Time Viewer

Controller