



MÄLARDALEN UNIVERSITY
SWEDEN

ESKILSTUNA

VÄSTERÅS

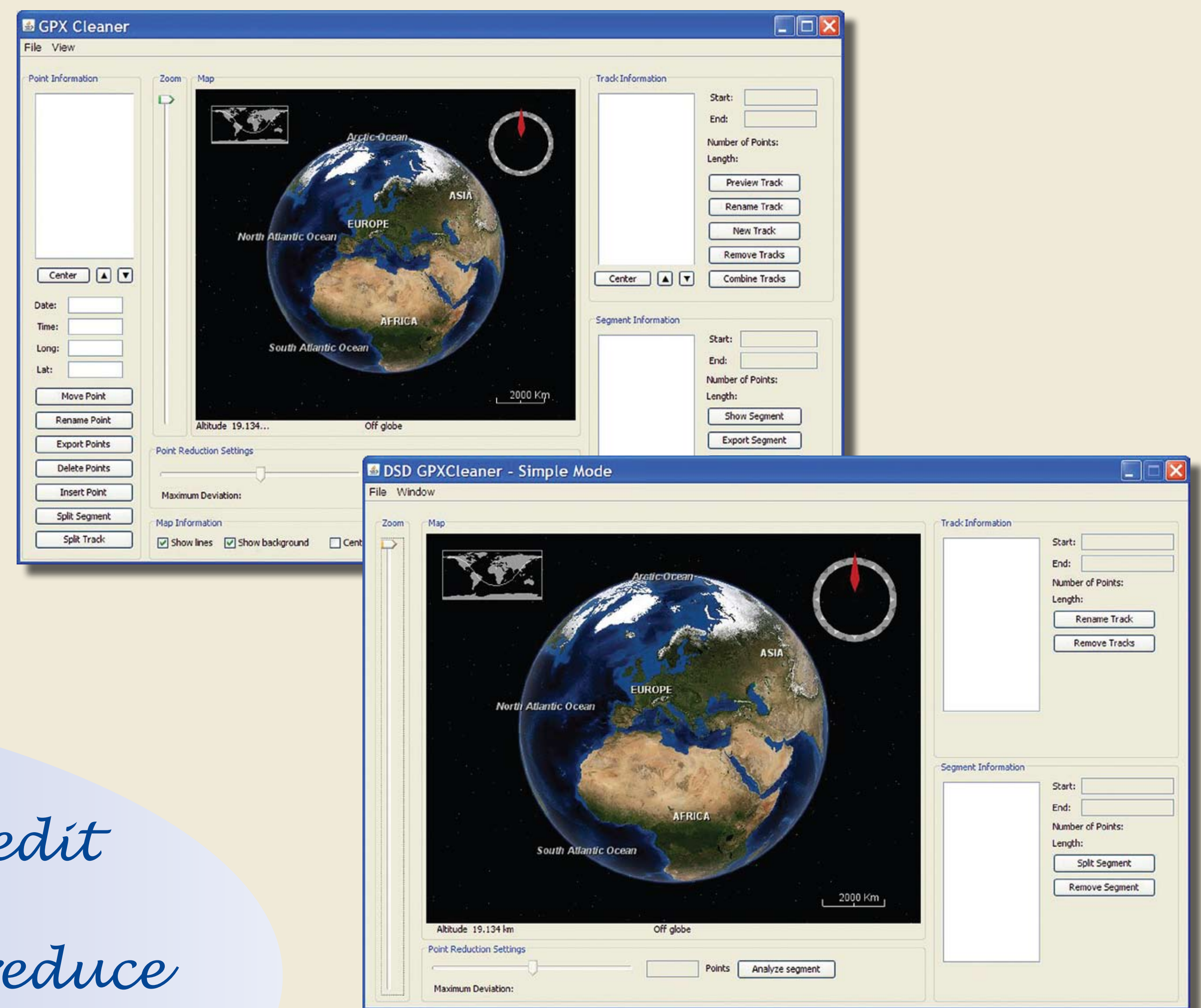
STOCKHOLM



cut & sew your GPS tracks

Project Goal

DSD GPX Cleaner allows users to view and edit the GPS records of their travels on a map, to join several excursions into one and to reduce the total number of recorded points with a minimal deviation from the original track.

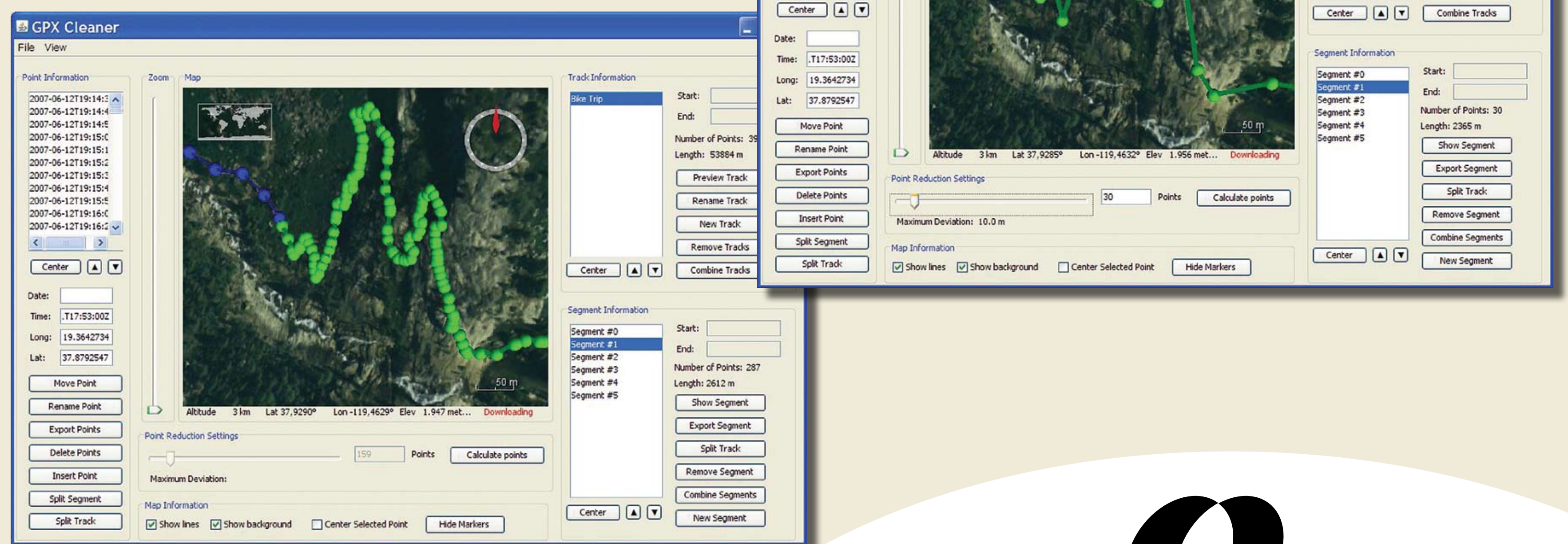


Architecture

The architecture is based upon a Model-View-Controller pattern, in which the model is the data structure of the GPX file, the view is the GUI and the controller is the actual manipulator of the GPX files

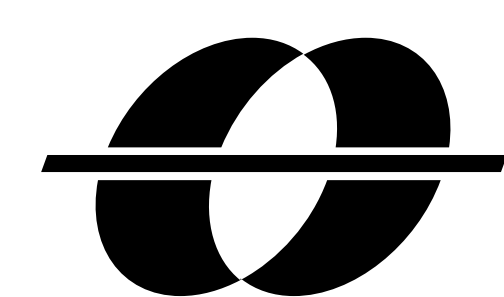
Our Uniqueness

- Two modes of operation, for novice and advance users
- High accuracy and speed in reducing track points given by three different mathematical algorithms
- High compatibility (Windows/Linux)



The Team

Tin Tvrtković
Federico Ciccozzi
Tihomir Bregović
Pablo Santibañez Jara
Josip Labor
Jenny Jutterström
Coen Tempelaars



MÄLARDALEN UNIVERSITY
SWEDEN



Università degli Studi di L'Aquila