

**Cardio-Vascular Construction Kit  
User's Manual**

**(Beta Version 2.0 8/31/90 revised 11/4/94)**

**Sarah A. Douglas  
Eckehard Doerry**

**CIS-TR-94-23  
November 1994**

Department of Computer and Information Science  
University of Oregon

---

# **Cardio-Vascular Construction Kit**

## **User's Manual**

(Beta Version 2.0 8/31/90 revised 11/4/94)

**Sarah A. Douglas  
Eckehard Doerry**

Dept. of Computer Science  
University of Oregon  
Eugene, OR. 97403

---

## Table of Contents

What is the Cardiovascular Construction Kit? .....	4
What You Should Read .....	6
If you are unfamiliar with the Macintosh .....	6
If you want to know whether you have the right equipment.....	6
If you are familiar with the Macintosh but not with the CVCK....	6
If you have been through the overview and want to know more details.....	6
What you need to know.....	7
A Beginner's Overview of the CardioVascular Construction Kit.....	8
Starting the Program.....	8
Introducing tools and components for cardiovascular construction. ....	9
The component palette.....	9
Basic Components .....	10
Ventricle.....	10
Vessel.....	10
One-way valve .....	11
Elbow.....	11
Tee.....	11
Capillary Bed .....	11
Producers/Consumers. ....	11
Muscle.....	11
Lung.....	12
Measuring Instruments .....	12
Gauge.....	12
Controlling the Simulation.....	12
Rotating Objects .....	13
Cleaning up.....	13
The Construction Process .....	14
Creating new components.....	14
Connecting components together.....	14
Connecting and manipulating gauges.....	14
Running the simulation.....	16
Interpreting results .....	16
Saving your work.....	16
Quitting the CVCK.....	17
An Example Construction.....	17
Advanced Information, Techniques and Tips.....	20
Component Parameters .....	20
Changing Component parameters.....	20
Component Parameter descriptions.....	20
Changing Gauge Measurement.....	21
Techniques.....	21
Comparative measurement.....	21
Tricks and Tips.....	22
Glossary .....	23
Appendices.....	25
IT DOESN'T WORK!!.....	25
I can't get this program to start!.....	25
CVCK runs but is apparently not working right. ....	26
Hardware and Software Requirements.....	28

## What is the Cardiovascular Construction Kit?

Cardiovascular systems are the key components of all vertebrates. Without some means to distribute oxygen to and remove waste from the tissues, only the simplest tiny organisms could exist. However, while all vertebrates have a cardiovascular system, there is wide variation among them: some have lungs while others use gills; some have one heart while others have several. This observation raises a number of interesting questions:

- Why do cardiovascular systems vary for different organisms?
- Couldn't one simply design a single "best" cardiovascular system for all organisms to use?
- Given some cardiovascular system, can we suggest improvements that will allow a given organism to perform/survive more effectively?

Unfortunately, such questions have traditionally been very difficult to answer. Because the cardiovascular system is so central to an organism's well-being, it is very difficult and costly to experiment on. A full-scale surgical station with elaborate equipment is needed even for the most simple modifications. Many advanced experiments involving more radical modifications have proven to be beyond current technology.

However, many of the questions we would like to answer are of a relatively simple and general nature. For instance: How high are the pressures and flows in various components? Do all components receive sufficient oxygen?

The Cardiovascular Construction Kit (CVCK) allows you, the user, to design and construct a wide range of cardiovascular systems, testing each one to see how it behaves — and whether it could actually exist and survive in a real organism. The Kit provides you with a set of basic components, e.g., pumps, vessels, capillaries and so on, which you may piece together to construct to build a cardiovascular system you are interested in exploring. Gauges and measurement techniques are provided so you can draw conclusions from your experiments.

This program will help you to discover the basic principles of cardiovascular design. It has been carefully constructed to be as simple and easy to use as possible in order to allow you to begin productive experimentation almost immediately.

## What You Should Read

**If you are unfamiliar with the Macintosh computer.**

*Read the next section: Macintosh Basics for the CVCK.*

**If you want to know whether you have the right equipment to run the CVCK program.**

*Read the Appendix entitled: Hardware and software requirements.*

**If you are familiar with the Macintosh but not with the CVCK program.**

*Read the section entitled: The CardioVascular Construction Kit: A Beginners Overview.*

**If you have been through the overview and want to know more details.**

*Read the section entitled: Advanced Information, Techniques and Tips.*

**If you've read through the manual, but have found something that doesn't seem to work in the CVCK.**

*Read the section entitled: IT DOESN'T WORK!*

## What you need to know

Throughout this manual, we will assume that you are already familiar with basic Macintosh operations and concepts. If you are not comfortable with these, refer to the *Macintosh Owner's Guide* or some other introduction to the Macintosh before starting. To help you on your way, the following is a list of Macintosh concepts you will need to understand, along with a brief explanation. For more information, consult one of the references mentioned above or simply ask someone who has worked with a Macintosh before to explain briefly.

- *Pointing*. Pointing simply refers to positioning the cursor, which is shaped like a pointer, over some object.
- *Clicking*. Also known as *single-clicking*. Position the cursor over the desired object and click the mouse button once. For example, "Single click on the heart to select it" means position the cursor over the heart object and click once. Clicking objects is typically used to *select* them (see below).
- *Double-clicking*. Just like single-clicking except that you click the mouse button *twice*, in rapid succession, instead of just once.
- *Dragging*. This is used to move objects around on the screen. To drag an object, "grab" the object by pointing to it and depressing the mouse button. Don't click the button! Depress it and hold it down. Now move the mouse -- the object is dragged around on the screen. When you have positioned the object where you want it, release the mouse button to "drop" the object.
- *Selecting*. This operation is used to pick one or more objects from a group of objects. Selecting is usually accomplished by clicking on the object to be selected. Typically, selected objects will become highlighted to indicate they have been selected. Example: "Select the capillary by clicking on it."
- *Opening*. Often there are parameter values associated with objects. For instance, a parameter of a ventricle might be the rate at which it beats. To access and adjust such parameters, one can often *open* the object by double-clicking on it. Example: "Open the gauge by double-clicking it".

The concepts listed above are few, but are central to the operation of most any Macintosh program. There are a number of less fundamental concepts which we will ignore or introduce as we encounter them.

## A Beginner's Overview of the CardioVascular Construction Kit

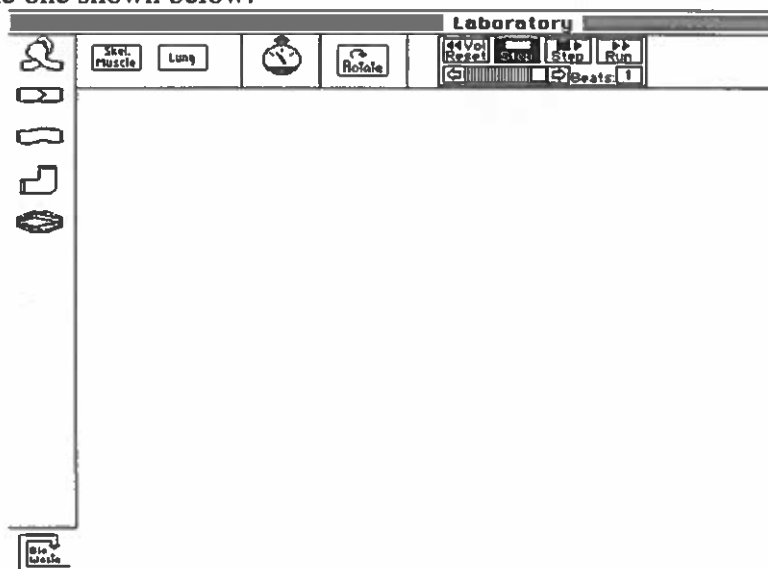
### Starting the Program

To start the CVCK program, simply double-click (as describe in last section) on the CVCK icon.



The CVCK Icon

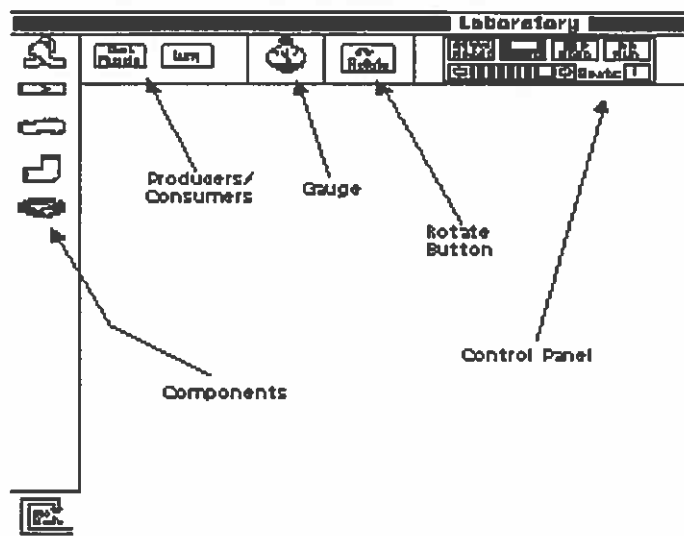
The program will now begin to load. **Be patient!** Loading the program take about 10-15 seconds. When it is finished, you will be presented with the laboratory workspace similar to the one shown below:



If after launching the CVCK application, you do not get the above screen, something is wrong! Consult the **IT DOESN'T WORK!** section near the end of this manual for trouble-shooting tips.

## Introducing tools and components for cardiovascular construction.

In this section we describe the various components and tools you will need to be familiar with in order to work with the CVCK. Since the CVCK is designed to be as simple as possible, you will find that most of the components and tools behave just as you would intuitively expect them to. The following figure gives an overview:



### The component palette

Using the CVCK involves constructing various cardiovascular systems by piecing them together using several basic components. The components are available as icons in the panel to the left of the workspace (see figure above). To use a component, simply drag its icon from the panel into the workspace. As the component leaves the panel, an instance (that is, a copy) of it is created in the workspace for you to use in your construction. The icon of the component will remain visible in the panel as well. In this way, you can create as many copies of a given kind of component as you like.

Once you drag a component into the workspace, you may notice that it changes subtly. Most importantly, you will see that a number of *hotspots* appear on the component. Hotspots look like small dots and are placed at various locations on the component. They are used to indicate where you may attach gauges to components as you work to measure parameters like pressure and flow.



You may measure system values such as pressure, oxygen concentration, and flow at any of the hotspots on this component. In addition, most components have a number of component parameters which affect the behavior of that component. For instance, most components have a *diameter* which describes how hard it is to push blood through the component. Such parameters may be changed by you as you explore different cardiovascular system. The parameters of each component type and the details of modifying them are discussed in the section entitled **Advanced Information, Techniques, and Tips**. For now, we simply list, for each type of component, the parameters associated with it.

We leave the details of the cardiovascular construction process for the next section and go on to briefly describe each of the available components.

### Basic Components



**Ventricle.** Ventricles provide the motivating force in any cardiovascular system. They are a source of *pressure*, which is crucial for creating flow of blood. **IMPORTANT!!** Do **not** confuse ventricles in CVCK with typical mammalian hearts. CVCK ventricles are simpler: they have no valves to direct flow through them. In order to create a valved heart, you may combine a ventricle with one or more one-way valves. If you have more than one ventricle in your system, they will all beat at the same rate. Changing the heart rate of one will automatically change the rate of the other(s). However, heart strength can be set individually.

*Parameters:* Heart Rate, Heart Strength



**Vessel.** Vessels are simply straight pieces of pipe. They represent the arteries and veins which constitute a large part of any circulatory system.

*Parameters:* Diameter.



**One-way valve.** One-way valves allow blood to pass through the valve in one direction only. For instance, the valve shown here will allow blood to pass only from left to right through it. In general, the valve which appears in the pipe points in the direction in which flow is possible.

*Parameters:* Diameter.



**Elbow.** Elbows are simply curved vessels.

*Parameters:* Diameter.



**Tee.** Tees allow branching in a cardiovascular construction since they have three connections.

*Parameters:* Diameter.



**Capillary Bed.** Capillaries are very important components. In a living organism, capillaries act as oxygen transfer points between the blood and oxygen producers (lungs) and consumers (muscles). Thus, capillaries serve as attachment points for muscles and lungs in the CVCK. You must include capillaries in a construction in order to be able to incorporate lungs and muscles.

*Parameters:* Diameter, Branching, Compliance.

### Producers/Consumers.



**Muscle.** Muscles represent the oxygen consumers of a living organism. Thus, when muscles are attached to a cardiovascular construction, the oxygen concentration of the system will begin to fall as the muscles use up available oxygen.

*Parameters:* Work Rate.



**Lung.** Lungs are sources of oxygen. Thus, when lungs are attached to a cardiovascular construction, the oxygen concentration of the system will begin to rise as the lungs produce oxygen.

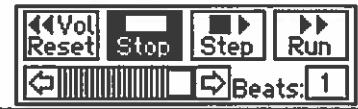
*Parameters:* Breathing Effort, Atmospheric Oxygen Concentration.

### Measuring Instruments.



**Gauge.** In order to analyze the behavior of some cardiovascular system you have constructed, you will need to be able to determine system values (e.g. pressure, flow, oxygen) at various places in the construction. Gauges allow you to do this. When you create a new gauge by dragging it into the workspace, it is a generic gauge -- you have not yet told it which parameter to measure. However, when it is attached to a hotspot on a cardiovascular construction, the system will list the parameters which can be measured at that point and prompt you to select one to measure. For instance, if you select FLOW from the list presented, the gauge becomes a flow measuring gauge. As detailed, in the section entitled **Advanced Information, Techniques and Tips**, there is a way to change the parameter being measured by a gauge.

### Controlling the Simulation.



**The control panel.** When you are finished constructing a cardiovascular system and attaching gauges, you will want to start the simulation to see how it behaves. The control panel, in the upper margin of the workspace, is used for this purpose.

Set the number of ventricle beats you would like the simulation to run (start with just one!) by clicking on the beat box and then typing a number.

Click on **Run** start the simulation -- you will be able to see the ventricles pumping and the blood flowing in the system. In addition, if you have any open gauges, you will see them recording their respective parameter values.

The speed of the simulation can be controlled by moving the slider in the control panel. Click on the slider arrows to move it back and forth.

Click on **Stop** to halt the simulation at any point. You may have to wait until the currently active beat finishes before the simulation stops.

Click on **Step** to slowly step through a beat cycle. This will allow you to more easily observe rapidly changing values and/or flows in the system.

Sometimes you may accidentally leave some vessel unconnected, with one or both ends unconnected to another component. When you start to simulation, this will cause all of the blood to drain out of the system (patient dies of massive blood loss!). Click on **Vol. Reset** to reset the blood in each component to its original level. This will allow you to continue experimenting without creating entirely new components.

### Rotating Objects



.. **The Rotate Button.** . As you work to construct some coardiovascular system, you will often need to rotate components in order to place them as you desire. Doing so is simple: just select the component you wish to rotate and then click the **rotate** button until the component is oriented correctly.

### Cleaning up.



**BioWaste.** At various points during your exploration, you may want to simply get rid of components and gauges. Simply drag whatever you wish to discard to the BioWaste Icon, located in the lower left margin of the workspace. When you release the component, it will disappear.

### The Construction Process

In the last section, we described the various components and tools to be found in the CVCK. In this section, we turn to the actual construction process, the process on composing individual components into functioning cardiovascular systems. In general, the process is very straightforward: You simply create components, connect them together to form some cardiovascular system of interest, and explore the construction by measuring quantities and analyzing system behavior.

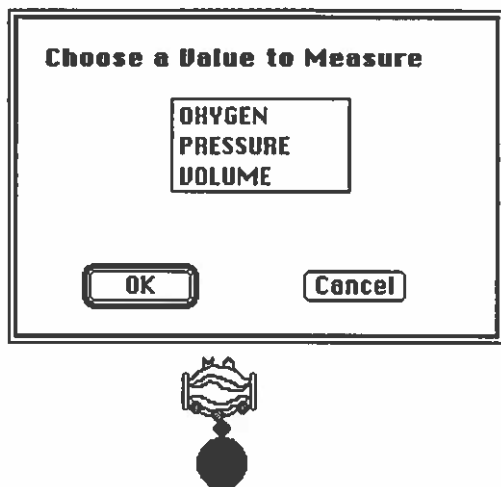
- 1. Creating new components.** You've already learned how to create new components to use for your construction: simply drag components out of the component palette into the workspace. In this way, you can create as many of each type of component as you like.

Sometimes you may accidentally create too many components for your construction or you may change your construction so that certain components become superfluous. In either case, it becomes desirable to get rid of components. Simply drag the components to be deleted into the BioWaste area.

- 2. Connecting components together.** Any component in the workspace may be positioned by simply dragging it to the desired location. To connect two components, just position them so that their openings are adjacent and they look (visually) connected. When a successful connection between two components is established, both components will flash once to indicate a valid connection.

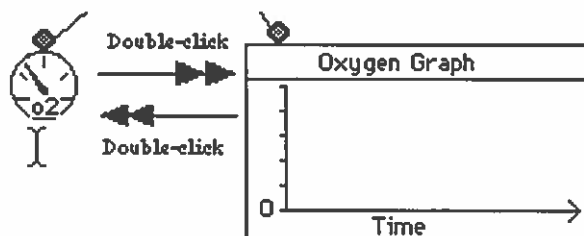
Often, a component must be rotated in order to create the system you have in mind. For instance, the one-way valves must be rotated so that they direct blood in the desired direction. Thus, any component may be rotated by selecting the component and clicking on the **rotate** button. Each time you click this button, the component will rotate 90 degrees clockwise.

- 3. Connecting and manipulating gauges.** In order to measure various systemic parameters, you will need to attach gauges to your construction. This is accomplished by a method similar to that used to connect components. Simply drag the gauge so that its head touches a hotspot on a component (see figure below). When a gauge is successfully attached, the CVCK will ask you what you want to measure using that gauge and will present you with a list of choices. Select the parameter you wish to measure and click OK. The gauge is now attached.



Note that, once attached, the gauge may be dragged away from the connection point without breaking the connection; a solid line between the gauge and its connection point indicates that the connection is still valid and helps you to remember where the gauge is attached. This is to allow you to arrange gauges in a manner which avoids cluttering the workspace unnecessarily. Also, it will be useful for comparative analysis, which we discuss in the section entitled Advanced Information, Techniques, and Tips.

A gauge may be in one of two states: Open or Closed. When it initially appears in the workspace a gauge is closed and looks like the small rounded icon shown in the tool palette. However, this icon is not much use -- it doesn't convey any information! To read a gauge, you must open it: simply double-click on the closed gauge to open it. When opened, a gauge takes the form of a graph, showing the variation of the parameter it is measuring over time. Double-clicking an open gauge causes it to revert to its closed form. The figure below summarizes this behavior.



Gauges are always active, whether open or closed. Thus, it doesn't matter if you open a gauge before or after running the simulation --- the results will be the same.

However, if you open a gauge before running the simulation, you can actually watch the values being filled in as the simulation runs.

4. **Running the simulation.** When you reach this step, you should have a complete cardiovascular construction in your workspace, with all gauges attached. It is now time to run your new system to see how it performs. Move to the control panel and click on run to start the simulation. Watch your construction closely, paying special attention to the arrows within the components which indicate the direction of blood flow as the simulation runs.
5. **Interpreting results.** The CVCK will perfectly simulate a real cardiovascular system, but it is still up to you to draw conclusions from the results. Aside from watching the flow arrows in the components as the system runs, the most effective way to glean information from the system is from the attached gauges. Examine the values recorded by the gauges you have attached as you try to answer your experimental questions. If necessary, attach new gauges and run the simulation again to gain more information.
6. **Saving your work.** After you have painstakingly constructed and tested some cardiovascular construction, you don't want to lose it all just because you have to go home. The CVCK allows you to easily save an entire workspace so that you can continue your exploration later. Simply pull down the **File** menu and select **Save** or **Save as...** . The system will save your work under a file name you specify.

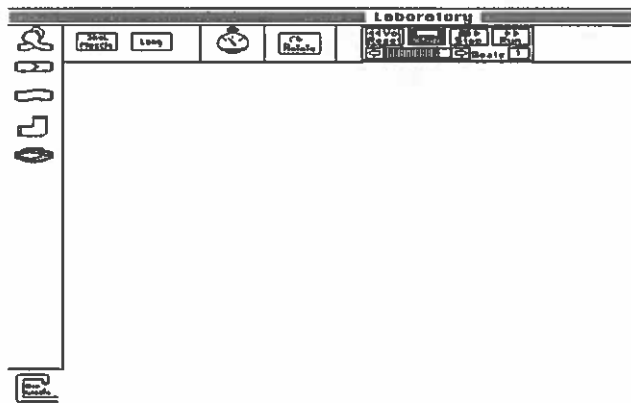
To continue working on a saved construction, select **Open...** from the **File** menu. You will be prompted for the name of the file to load. Don't panic if the reloaded workspace looks slightly different from the one you saved. The CVCK may close open gauges and return them to their attached positions in order to save space. Simply open and/or reposition the gauges and continue working.

7. **Quitting the CVCK.** When you are ready to end your session with the CVCK, select **Quit** from the **File** menu. If you have made changes to your workspace since the last save, you will be asked whether you want save those changes before quitting.

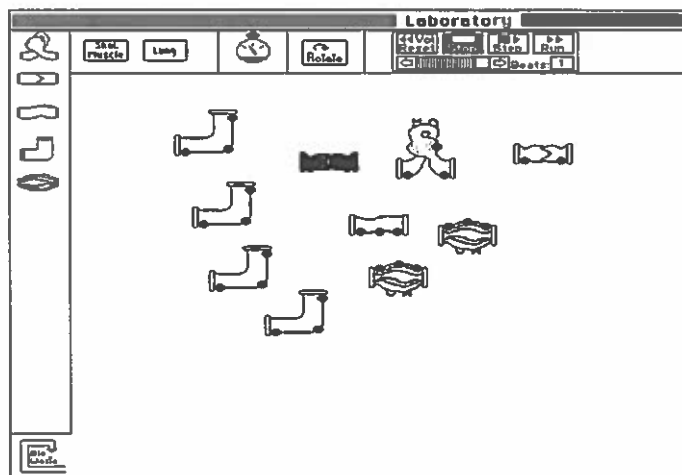
## An Example Construction

In previous sections, you learned everything you need in order to successfully use the CVCK to construct and analyze cardiovascular systems. However, even the most complete description may leave the reader wondering how to put it all together. Thus, this section gives a brief example for you to follow. It should help you get the hang of things.

**Step1.** Begin with an empty workspace. Create one ventricle, two one-way valves, one vessel, two capillaries, and four elbows by dragging these components into the workspace from the component palette. Your workspace should look something like:

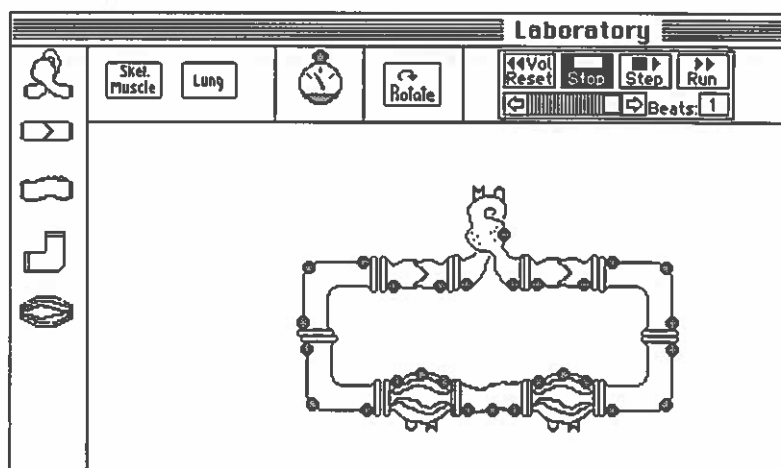


**Step2.** Connect the components. Arrange and connect the components to construct the cardiovascular system shown below. You may have to rotate the elbows and one-way valves in order to position them correctly. Refer back to the previous section if you've forgotten how.

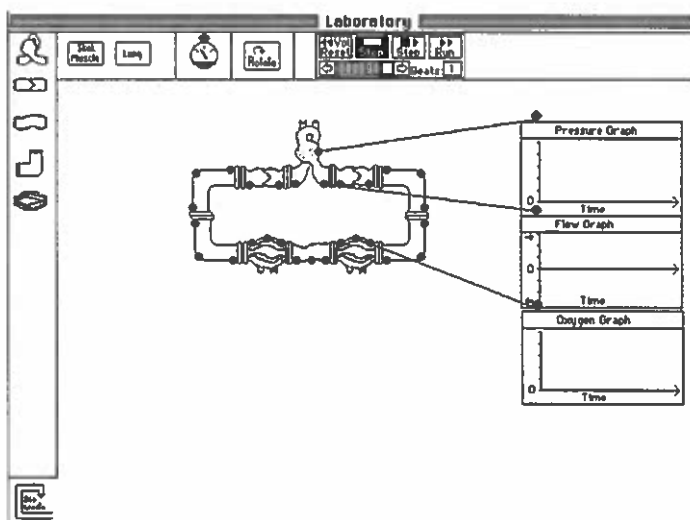




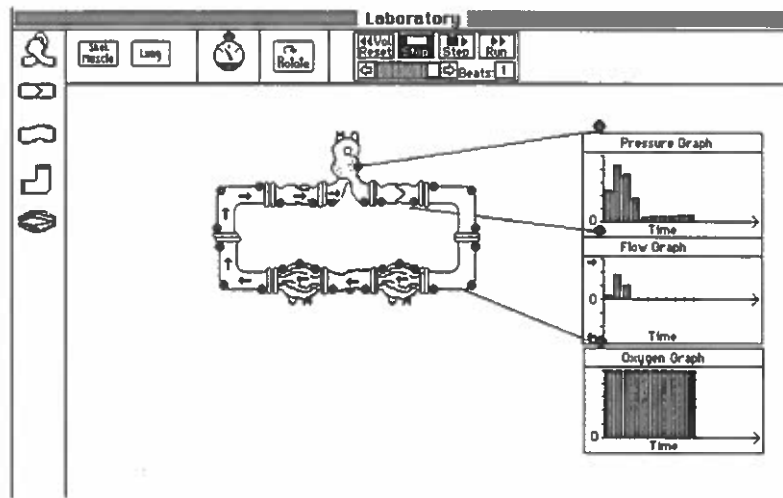
**Step3.** Create three gauges by dragging them into the workspace. Make one of them a pressure gauge, by attaching it to the middle hotspot of the ventricle; make another a flow gauge, by attaching it to the right hand hotspot of the heart; and make the last one an oxygen gauge, attaching it to the central hotspot of the capillary. The resulting construction is shown below.



**Step4.** Open all of the gauges by double-clicking them. Position the open gauges, one above the other as shown below.



**Step5.** Run the simulation by clicking **Run** in the control panel. All of the gauges should busily record values. The next figure shows the workspace just after the run.



You now know everything you need to know in order to successfully use the CVCK. The rest is up to you. The CVCK is the ultimate laboratory — what you can explore is limited only by your creativity. The remaining sections cover advanced information and other CVCK details. You may read them now or wait until you have mastered the concepts presented above and are ready for more in-depth exploration.

## Advanced Information, Techniques and Tips.

In this section, we'll work to expose some of the hidden functionality and features of the CVCK. Before you read this section, be sure you understand the basic principles and usage of the CVCK.

### Component Parameters

Earlier, we noted that each component has one or more *component parameters* which determine the behavior of that component. Here, we show how to vary those parameters and describe them in more detail. However, we are purposefully sketchy on the effects of changing various parameters values to avoid giving anything away. We encourage you to explore various settings yourself to determine their effect.

#### Changing Component parameters.

Regardless of the component, the way to examine and/or modify a component's parameters is the same: simply double-click the component. You will be shown a list of the component's parameters along with their current settings. You may change the settings by selecting a new value.

#### Component Parameter descriptions.

All components have a **diameter**. This determines the *resistance* in the component — how hard it is to push blood through the component. Decreasing the diameter will (for a given pressure) cause a decrease in flow.

The **ventricle** has several unique parameters. **Beat rate** indicates how fast the ventricle is beating. If you have more than one ventricle in your system, they will all beat at the same rate. Changing the rate of one will automatically change the rate of the other(s). **Heart Strength** allows you to vary the strength of the ventricle. For instance, the heart strength of an organism typically decreases with age. If you have more than one ventricle, heart strength can be set individually.

The **capillary bed** has a number of unique parameters. The **Branching** of the capillary bed specifies how many tiny vessels the bed is composed of. The higher the branching, the more the surface area of the capillaries; the more oxygen can be transferred in the capillary bed. The **compliance** indicates flexibility of all other vessels (arteries and veins). A very

compliant vessel can expand (swell) to absorb sudden pressure changes. In the Cardio-Vascular Construction Kit, for modeling purposes only, system compliance is modified in the capillary bed component.

The **muscle** has an important parameter known as the **work rate**, determines how much oxygen it draws from the system. Clearly, higher work rates require more oxygen.

The **lung** has several important parameters. The **breathing effort** of the lung indicates how fast the organism is breathing. That is, more oxygen can be brought into the system by heavy quick breathing. The **Atmospheric Oxygen Concentration** indicates the amount of oxygen available in the atmosphere. For instance, there is more oxygen in the air at sea level than at the top of a mountain.

### Changing Gauge Measurement.

It may sometimes be the case that you want to change the system value that some gauge is measuring. For instance, you may have an oxygen gauge attached at some point, but decide you would rather measure pressure there instead. One way to manage this is to throw away the oxygen gauge and then to create and attach a pressure gauge at that point. But there is an easier way. Select the gauge and then choose **Measure...** from the **Control** menu. You will be presented with a list a values that can be measured at that point. Select the value you would like to measure.

### Techniques

**Comparative measurement.** The CVCK does not present you with precise numerical values for parameters. This would only be unnecessarily confusing, since we are interested in the overall concepts and not the precise equations. As a result, it is not possible to perform common operations like addition and subtraction on the values displayed by the gauges. Thus, we adopt a **comparative** approach: we compare the results of two gauges to determine their behavior *relative to each other*. For example, suppose we are trying to determine what the pressure does with respect to the flow in the example construction given in the last section. To make comparative analysis easy, we simply place the graphs for pressure and flow directly above one another. In this way, we can easily see that the flow increases when the pressure in the ventricle rises. There are numerous other occasions where this technique of lining up graphs is useful for simplifying analysis.

## Tricks and Tips.

**Trick1:** It is often the case that you have several gauges attached to a component. When you prepare to throw away such a component, it is not necessary to first throw away all of the attached gauges. Simply throw the component away --- all attached gauges are automatically deleted as well.

**Trick2:** The workspace has a *grow box* in the lower right hand corner. To adjust the size of the workspace, simply drag this box. As you drag, you will see the outlines of the workspace changing. When it is sized to your satisfaction, stop dragging.

**Trick3:** Sometimes you may forget something about a tool or component in the CVCK. To get a brief description of something, highlight and select **Describe** from the **Help** menu.

## Glossary

<b>Closed System</b>	Any functioning cardiovascular system must be a closed system. That is, blood should be conserved. In an open system, there may be “leaks” which allow blood to trickle away, causing the system to fail.
<b>Component</b>	A piece that may be used in constructing a cardiovascular simulation. For instance, hearts, lungs, and muscles are all components.
<b>Control Panel</b>	This is the control mechanism for the simulation. It is similar to the controls for a typical videotape machine.
<b>CVCK</b>	The CardioVascular Construction Kit (this program).
<b>Dialog Box</b>	A window that displays certain information and/or contains a request for information of some sort. The parameter windows for the cardiovascular components are examples of dialog boxes.
<b>Gauge</b>	A gauge is a specialized tool that can be used to measure various quantities at a given place in a cardiovascular construction. Quantities that can currently be measured include oxygen concentration, pressure and flow.
<b>Qualitative Analysis</b>	In quantitative analysis, a scientist looks at precise values (numbers) in order to draw conclusions. In contrast, <b>qualitative</b> analysis involves looking at overall trends and behavior. Thus, the values displayed by gauges in the CVCK are qualitative in that they are not precise values but rather graphs that show the abstract behavior of the quantity being measured. It has been hypothesized that all scientific discovery begins with qualitative thinking and analysis; quantitative analysis is only invoked when the problem has been solved abstractly, in order to get precise answers.
<b>Scientific Method</b>	A well-defined approach to experimentation. See your Biology text for detailed explanation. A key feature of this approach is <i>hypothesis formation</i> , which must occur as a first step and which should drive all further experimentation. In the CVCK, students are asked to come up with a hypothesis about the functioning of some cardiovascular system and then use the CVCK to construct a simulation that will prove or disprove that hypothesis.

## Appendices

### IT DOESN'T WORK!!

Even the best program has some bugs in it --- and if you've run into one of these, there's very little we can do to help you. However, there are many situations in which there is some other problem, something that is not an error at all, which is causing the behavior frustrating you. In this section, we attempt to predict a number of problems you might run into and to describe fixes for them. In general, there are two types of problems: Ones that prevent you from starting the program at all and those that occur as you are working with the CVCK.

#### I can't get this program to start!

The Symptoms	The Problem	The Cure
The CVCK program won't load. After double clicking the icon, the program begins to load, but just freezes up and never presents the user with a workspace.	The problem is most likely that the CVCK program can't find the resources it needs. The <b>Icons</b> and <b>Bitmaps</b> files must be in the same folder as the CVCK in order for loading to successful.	Move the <b>Icons</b> and <b>Bitmaps</b> files into the same folder as the CVCK application. Restart the computer and try again.
The CVCK program reports an insufficient memory error during startup.	This means there is not enough memory. Are you sure the machine has at least 4 megabytes of free (RAM) memory? Are you running other applications (under Multifinder) which can be closed?	First, find out how much memory you have: Under the Apple ( ) menu, select " <b>About Finder...</b> ". You will see a dialog box detailing the current memory usage in your system. The crucial figure is the <b>Largest Unused Block</b> . This value must be over 3000K in order for the system to run. If it is not, and there are no other applications currently running, then CVCK can not be run on that machine. If there are other applications currently running, try quitting those applications in order to free up memory.

**CVCK runs but is apparently not working right.**

Sometimes there is no crash or explicit error, but the results of the simulation simply don't seem right. We have discovered several such scenarios, which we list below.

**It IS working!** The most likely scenario is that the simulation is, in fact, working perfectly and that you, the user, have overlooked something. For instance, you may have:

- **Constructed a system with no ventricle.** Since the ventricle is the only “moving part” in a cardiovascular system, not much will happen if you don't include one in your construction. Like the famous Tin Man of Oz, your organism has no heart!
- **Opposing valves.** One-way valves allow pressure to flow only in one direction. Thus, if you surround a ventricle on both sides with one-way valves both pointed inward, the blood will have no way to leave the heart. This is analogous to holding your nose and mouth while trying to exhale -- there is nowhere for the air to go. Similarly, if both valves point outward, blood will be allowed to flow out of the heart but never back in. Again, nothing will happen after the first few beats.
- **Out of blood.** If you've left some component unconnected at one end, all of the blood will “spill” out of the system when you run it. Correct the “leak” and click on **Vol. Reset** in the control panel to refill the system with blood.

**Multiple Ventricles.** The **ventricle** has several unique parameters. **Beat rate** indicates how fast the ventricle is beating. If you have more than one ventricle in your system, they will all beat at the same rate. Changing the rate of one will automatically change the rate of the other(s). **Heart Strength** allows you to vary the strength of the ventricle. For instance, the heart strength of an organism typically decreases with age. If you have more than one ventricle, heart strength can be set individually.



## Hardware and Software Requirements

The CVCK is designed to operate best on the Macintosh II family of computers. However, it will run nicely (though slower on lower end models) on Macintoshes of any type, so long as at least 4 megabytes are available to the program.

Aside from having the CVCK application program itself, you must have several other pieces of software installed in order for the application to run. In particular, the CVCK application assumes that the files **bitmaps** and **icons**, which are included in the CVCK software package, are available and are placed *in the same folder as the CVCK application*. When you start the program, it looks for these resource files in its folder. If they are not there, *the program will not load successfully!*

### Summary of Hardware and Software Requirements

- Macintosh computer with at least 4 megabytes of available random access memory (RAM).
- The CVCK application installed in some folder.
- The resource files **icons** and **bitmaps** installed in the same folder as the application.